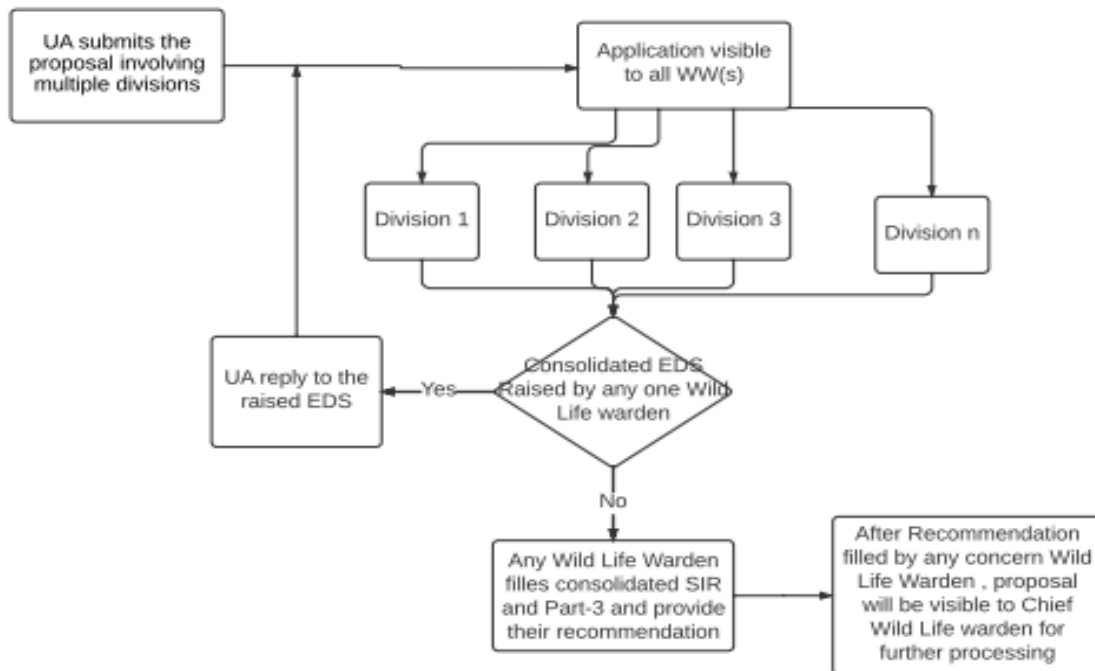


Introduction

Multi Division WL Proposals will involve proposals falling under more than one Division. User Agency (UA) will select multiple Divisions while filling Part I & II of the application. The proposal will be then forwarded to all the Wild Life Wardens (WWs) of the Divisions for their scrutiny and recommendations. Below is the workflow & steps that may be carried out for Multi-Division Proposals-



- User Agency will fill Part I & II after selecting multiple division and submits it for further processing.
- The proposal submitted by UA is visible to all the WWs of multiple divisions involved for scrutiny and recommendations.
- In case of any shortcoming, any concerned WW may raise consolidated EDS, or they can simply proceed further for the recommendation part.
- If any EDS is raised by the WW, then it will reflect in the UA dashboard
- UA will reply to the raised EDS and submit.
- After getting the EDS reply, Proposal will be visible in to all the WWs of multiple divisions involved for scrutiny and recommendations.
- Any WW may fill the consolidated SIR and Part-3 after discussion with all the involved Wild Life Warden.
- And as any Wild Life warden submits the Part-3, then proposal will be moved to Chief Wild Life Warden for further processing.