

CSR SETS NLC INDIA'S BUSINESS DEEPLY IN THE SOCIETY

1. ABOUT NLC INDIA LIMITED:

NLC India Limited (formerly Neyveli Lignite Corporation Limited) (NLCIL) is a "Navratna" Government of India Company. It is a pioneer in large scale opencast lignite mining and lignite based power generation in its own pit-head power stations, for six decades. 90% of its paid up capital of INR 1,678 Cr. is owned by the Government of India. It is also diversifying into coal and renewable energy sectors.

NLCIL is energizing India by utilizing the lignite from its 4 mines for supplying Electricity to the Distribution / Supply Companies in the Southern States and Rajasthan, from its 5 Thermal Power Plants of 3,240 MW Capacity, located in Tamil Nadu and Rajasthan. In Neyveli area, raw lignite is supplied to an Independent Power Producer and also sold by e-auctioning.

NLCIL is a reliable and efficient provider of energy, operating with a Plant Load Factor of 83.19% as against the Industry Average of 65.11%. It has achieved 58.4% growth (2470- 4341 MW) in the installed capacity, as against the 48.9% growth (52,603- 63,297 MW) envisaged for the Indian Power Sector in the XII plan period-2017. NLCIL accounts for about 60% of Lignite Production and 1.97% of Coal and Lignite Based Plant Availability, in this sub-sector of Indian Energy Market. Electricity in the order of 19,729 Million Units a year is generated by NLCIL.

NLCIL's market capitalization ranges between INR 12,000 to 14,000 Cr., with the net-worth of INR 15271 Cr., as on 31.03.2016. The turnover in 2015-16 was INR 6,669 Cr., as against INR 6,088 Cr. in 2014-15. The profit before and after tax for the year 2015-16 are INR 1,926 Cr. and INR 1,204 Cr., respectively.

NLCIL is poised to grow by 181.5% (4,341- 12,221 MW) during the next plan period-2022 as against the envisaged Industry Growth of 67.1% (94285- 157582 MW) and is heading towards 7.76% share by 2022. Due to diversification, the Coal to Lignite based power-supply by NLCIL would increase from about a third to nearly a half by 2022.

NLCIL has also entered the renewable energy market with its wind and solar power projects of 51 MW and 140 MW and proposes to establish solar power plants in the Solar Power Parks in various Indian States.

NLCIL's operating units are certified to ISO 9001 / ISO 14001 / OHSAS 18000 standards. Other service units are also certified to the relevant standards, apart from a host of Accreditations / Memberships Affiliations.

NLCIL is creating and maintaining its culture of Harmony and Cordiality with the stakeholders, through the 16,445 employees and 14,516 contract-workmen and simultaneously achieving its purpose of "Nation Building". These achievements are through the best CSR practices, as illustrated in **Diagram-1**. The social capital thus built by NLCIL sets its business deeply in the society, as evidenced by the stable structure and high quality of relationship with all its stakeholders.

2. KEY STRATEGIC CHALLENGES FACED BY NLCIL:

As such, Energy is the key-link to eliminate poverty, by stimulating social benefits and economic development in an environmentally sustainable manner. The key challenges in providing sustainable flow of energy to the Nation through NLCIL emerge basically from its technology and projects driven business, harnessing the required resources from the environment and society. The resource sufficiency is to be ensured through these tie-ups dynamically, along the lines of Energy and Land Stock and Flows, crossing the geographic barriers as well as the system boundaries represented by Project Timelines, Legal and Policy Frameworks and Territorial Features, as illustrated in the diagrams **Diagrams-2 and 3**.

Functional Integrity is maintained through concrete policy provisions, including those for internalizing CSR, safeguarding the CSR fund from extraneous elements and also for balancing the Business and the CSR program in the changing situations.

The Emergent Capacity of NLCIL to foster the ability to operate new patterns of Business with sustained resource sufficiency and the related CSR programs is continuously built through flexible, extendible and expandable CSR program structure, under the Schema of NLCIL's Comprehensive CSR Project, MAANAV VIKAS, as depicted in **Diagram-5**.

4. NLCIL's CSR POLICY:

NLCIL imbibes CSR as one of its core values as reflected in the company's Vision & Mission statements.

VISION - To emerge as a leading Mining and Power Company, continue to be a socially responsible company and strive for operational excellence in Mining & Exploration.

MISSION - To play an active role in the society and be sensitive.

VALUE CODE: Maximizing Stakeholders' value in harmony with Business Goals

The CSR Policy formulated and recommended by the CSR committee of the Board and approved by the Board of Directors is in line with the CSR provisions of the Companies Act, 2013, the Rules there-under and the Guidelines issued by the Department of Public Enterprises.

It has provisions for carrying forward the CSR Agenda of NLCIL, with at least 2% of average net profits earned during the preceding three financial years as annual CSR budget and also for the monitoring of the CSR Policy by the CSR Committee.

The Board of Directors reviews the implementation of the CSR Policy, from time to time and ensures that at least two percent of the average net profit of the Company for the last three years is spent by NLCIL on CSR.

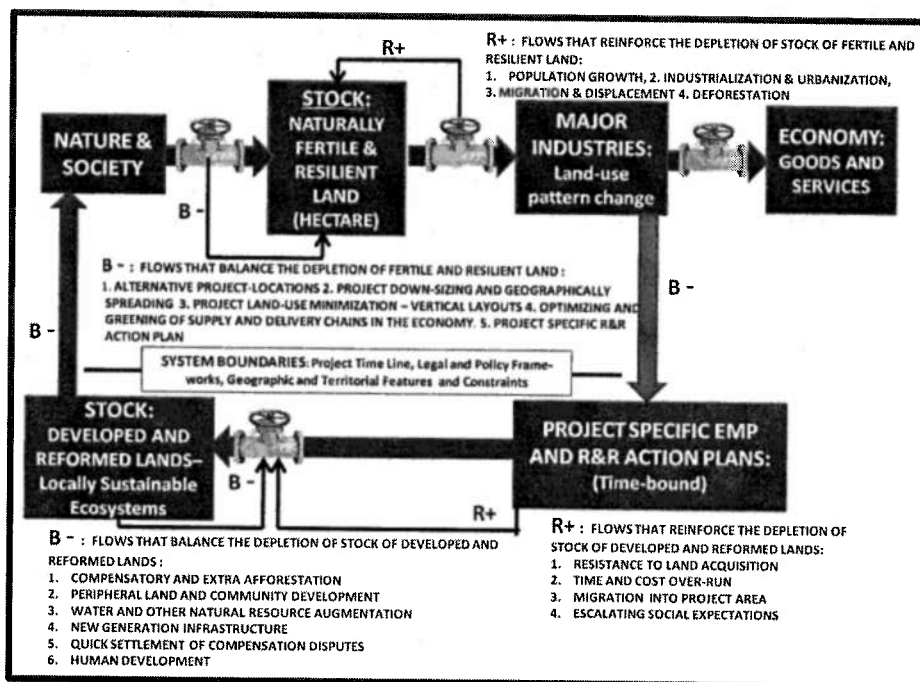


DIAGRAM-3: STOCK AND FLOW DIAGRAM OF LAND FOR MAJOR INDUSTRIES

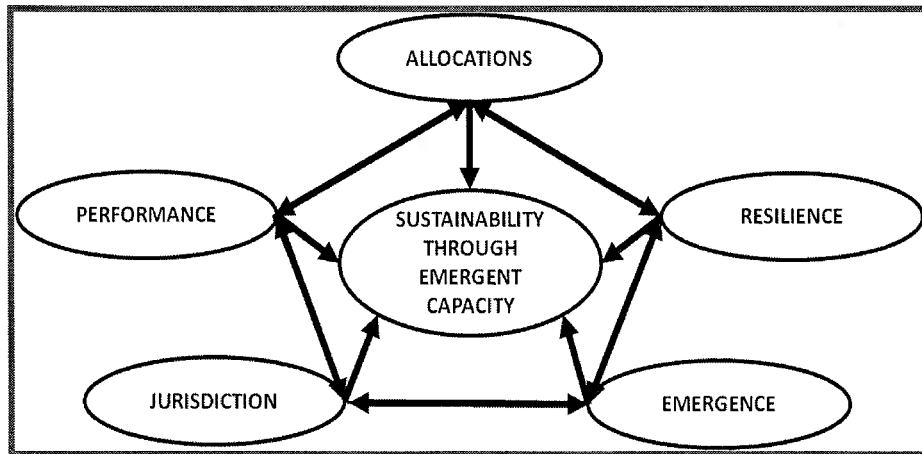


DIAGRAM-4: BUILDING THE EMERGENT CAPACITY FOR SUSTAINABILITY

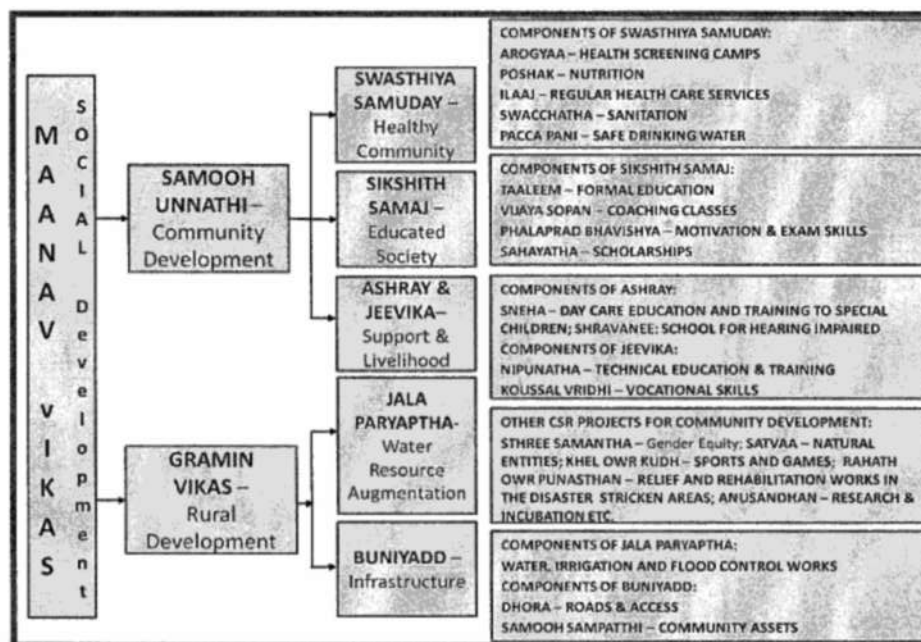


DIAGRAM-6: SCHEMA OF MAANAV VIKAS - NLCIL's COMPREHENSIVE CSR PROJECT

The ongoing and new CSR projects and programs comprise of a spectrum of developmental activities in the major focus areas of development. The two prongs of the integrated CSR project of NLCIL "MAANAV VIKAS" for Sustainable Social Development are "SAMOOH UNNATHI", the Community Development and "GRAMIN VIKAS", the Rural Development. They in turn have many components for Community Development, like "SWASTHIYA SAMUDAY", the Healthy Community, "SIKSHITH SAMAJ", the Educated Society, "ASHRAY", the Support Services, "JEEVIKA", the Livelihood. Water-resource Augmentation project "JALA PARYAPTHA" and Social Infrastructure project "BUNIYAD" comprising of Roads and Access "DHORA" and Community Assets "SAMOOH SAMPATHI" are for Rural Development. These component projects have further programs comprising of activities prudently chosen from the Schedule VII of the Companies Act, 2013 in NLCIL's context. These activities complement one another and nicely dovetail with each other for overall socioeconomic development in the operating regions. These initiatives dovetail also with the Development Plans of State and Central Government Departments and Agencies. They build sustainable relationships with the stakeholders and the public at large, as they address the emerging social needs. As such, the profile of the CSR Project / Program is extendable and

expandable by design. This has enabled NLCIL to transform its CSR, seamlessly from DPE Guidelines regime to the legal framework under Section 135 of the Companies Act, 2013 from the day one.

NLCIL's CSR extends along the lines of supply of resources and services to the organization, as far beyond the points of legal-compliance as possible, within the resource-capability and management-feasibility. This responsibility enhances NLCIL's Social and Environmental performance.

5. NLCIL's CSR STRATEGY AND IMPLEMENTATION:

NLCIL's CSR strategy is holistic in addressing the basic needs of the deprived in surrounding communities. It is focused on sustainable development and inclusive growth. Such development is attained in the operating regions by earmarking at-least 75% of the CSR fund for carrying out Socially Responsible activities in the local areas within the States of its projects. These allocations are prudently trifurcated into Corpus for perpetuating the important regular programs, Outlays for capital works for building social infrastructure for Rural Development and the Annual Allocations for various perennial services like Health Care, Education, Skill Development and other Community Empowerment Programs.

CSR projects and programs are undertaken by NLCIL, utilizing the in-house expertise to the maximum extent possible in order to optimize the agency costs and balance it against logistic costs. Various specialized segments of NLCIL have been identified for carrying on the CSR projects and programs requiring varied expertise. These employees are encouraged to engage pro bono with the communities, at the grass-root level and collaborate with their representatives and the key stakeholders in the coordination process. The specialized and dedicated segments like Medical Branch, Education Department, Bus Section, CSR-cell etc. are carrying out CSR Activities falling in the purview of their disciplines. The effectiveness of their engagement with the stakeholders is considered as a key indicator of their on-the-job performance, as well as of the CSR of NLCIL.

6. CSR SPEND BY NLCIL:

In 2013-14, the CSR Expenditure of NLCIL was INR 26.30 Cr, which is 1.80% of the profit after tax as against the Norm of 1% as per the DPE Guidelines. In 2014-15, the CSR Spend of NLCIL was INR 47.49 Cr. or 2.28% of the average net profits in the three preceding years, as against the norm of 2%, as per Section 135 of the Companies Act, 2013.

7. NLCIL's CSR SPEND BALANCED ACROSS DEVELOPMENT SECTORS:

The CSR spend of NLCIL has been balanced across major focus areas for development and concentrated in the Backward District of Cuddalore District in Tamil Nadu and also Bikaner District of Rajasthan States. 43.1% of the CSR expenditure of INR 47.49 Cr. or INR 20.45 Cr. in the year 2014-15 was for the Community Development projects under NLC's ongoing CSR project of "SAMOOH UNNATHI". An Amount of INR 22.99 Cr. or 48.4% was for rural development project "GRAMIN VIKAS", benefiting the peripheral villages in the operating region. The remaining 8.5% or INR 4.05 Cr. was NLC's contribution to the relief and rehabilitation works in the disaster-affected areas of the states of Andhra Pradesh, Odisha and Jammu & Kashmir, under NLCIL's dynamically operated "RAHATH OWR PUNASTHAN" Project.

From the view point of Schedule VII of the Act, the Expenditure on "SWASTHIYA SAMUDAY" project covering Health Care, Family Welfare, Sanitation and safe drinking water was INR 7.63

Cr., accounting for a 16.1% share of the total CSR expenditure of INR 47.49 Cr. For the projects of "SIKSHITH SAMAAJ", "ASHRAY", "JEEVIKA", "STHREE SAMANTHA" covering Education, Special Education, Scholarships, Skill Development and the conjunctional promotion of Gender Equality, it was INR 11.51 Cr. or 24.2%. An amount of INR 1.31 or 2.8% was for Other Community Development Activities including Animal Welfare, Heritage, Arts, Culture, Sports, Welfare of Army Veterans, Research / Technology Incubation Projects, etc. As regards the Rural Development, the expenditure for the "JALA PARYAPTHA" project for Water Resources Augmentation, Irrigation and Flood Control Works was INR 10.97 Cr., accounting for a share of 23.1%. It was INR 11.78 Cr. or 24.8% for the project "DHORA" for providing Roads and Access and INR 0.24 Cr. or 0.5% for sundry community assets provided in the peripheral villages under "SAMOOH SAMPATHI".

The balanced spending of CSR funds by NLCIL across these sectors of development is illustrated in the Chart-1 to Chart-3.

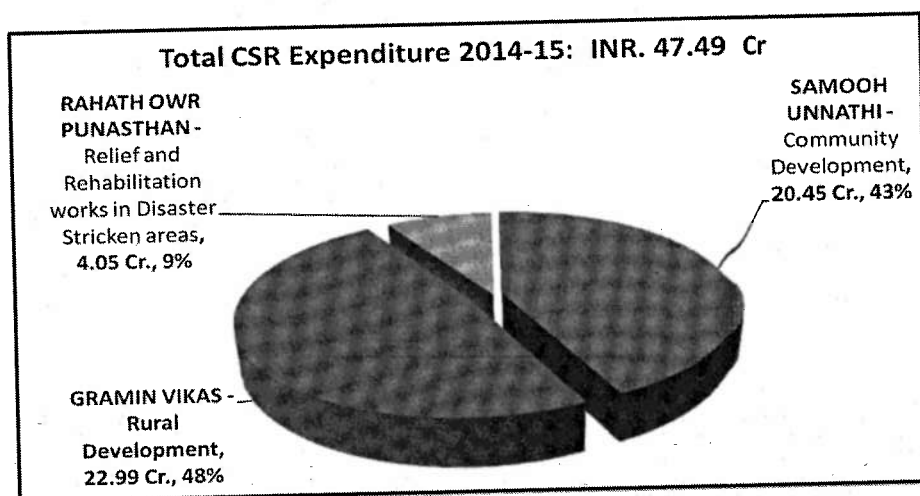


CHART-1.

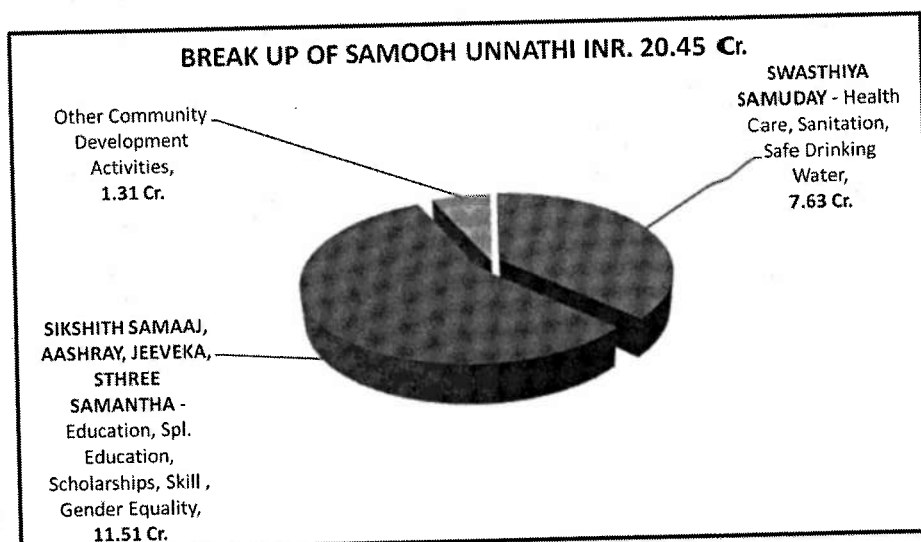


CHART-2.

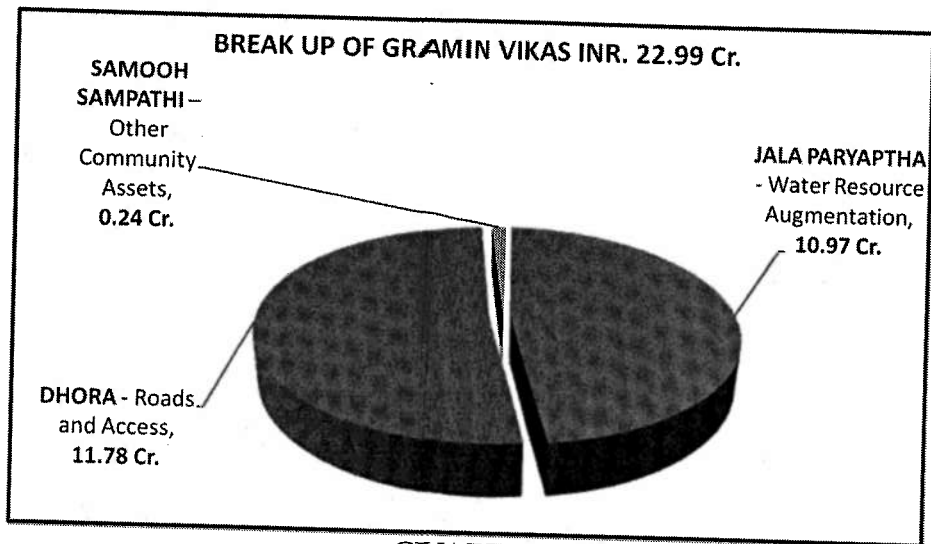


CHART-3.

The CSR Projects and Expenditure Details are Given Below:

NLC INDIA LIMITED, NEYVELI

CSR PROJECTS AND EXPENDITURE (Rs. in Lakhs)

| S. NO | CSR PROJECT UNDERTAKEN OR ACTIVITY CARRIED OUT | LOCATION OF THE CSR PROJECT/ ACTIVITY (AREA: DISTRICT, STATE) | EXPENDITURE IN 2014-15 |
|---|--|---|------------------------|
| CSR PROGRAM OF NLC - MAANAV VIKAS - Social Development | | | |
| 1. | SAMOOH UNNATHI - Community Development | | |
| 1.1 | SWASTHIYA SAMUDAY - Healthy Community | | |
| 1.1.1 | NLCIL - Arogyaa Camps - Health Camps | Local: Cuddalore, Tamil Nadu | 18.229 |
| 1.1.2 | POSHAK- Nutritious Food Supplements | Local: Cuddalore, Tamil Nadu | 11.146 |
| 1.1.3 | ILAAJ OWR SWACCHATHA - Health Care & Sanitation | Local: Cuddalore, Tamil Nadu and Bikaner, Rajasthan | 643.300 |
| 1.1.4 | PACCA PANI - Safe Drinking Water | Local: Cuddalore, Tamil Nadu and Bikaner, Rajasthan | 89.649 |
| SUBTOTAL: Health, Sanitation and Safe Drinking Water | | | 762.324 |
| 1.2.1 | TAALEEM - Formal Education to Children and Youth | Local: Cuddalore, Tamil Nadu | 944.888 |
| 1.2.2 | VIJAYA SOPAN - Step to Victory (Vetripadi) | Local: Cuddalore, Tamil Nadu | 4.868 |

| | | | |
|---|---|---|-----------------|
| 1.2.3 | PHALAPRAD BHANISHYA - Fruitful Future (Vetrikkanni Kittium) | Local: Cuddalore, Tamil Nadu | 4.272 |
| 1.2.4 | SAHAYATHA - Scholarships. | Local: Cuddalore, Tamil Nadu | 158.354 |
| 1.3 | ASHRAY - Support Services | | |
| 1.3.1 | SNEHA - Friendly Corporate - Daycare Education & Training to Special Children | Local: Cuddalore, Tamil Nadu | 10.812 |
| 1.4 | JEEVIKA - Livelihood | | |
| 1.4.1 | NIPUNATHA - Technical Skills | Local: Bikaner, Rajasthan | 1.024 |
| 1.4.2 | KOUSAAL VRIDHI - Vocational Skill development | Local: Cuddalore, Tamil Nadu | 18.309 |
| 1.5 | OTHER COMMUNITY EMPOWERMENT PROJECTS | | |
| 1.5.1 | VATI - the Girl Child | Local: Bikaner, Rajasthan | 0.756 |
| 1.5.2 | PRAVEEN STHREE - the Skilled Woman | Local: Cuddalore, Tamil Nadu | 7.922 |
| SUBTOTAL: Education, Special Education, Skill Development and Other Empowerment programs | | | 1151.205 |
| 1.6.1 | JEEV HITH - Care for Animals | Local: Bikaner, Rajasthan | 4.057 |
| 1.7.1 | NAVEENKARAN - Renovation | Local: Cuddalore and Tamil Nadu State | 14.174 |
| 1.7.2 | VAARDHAT - Events | Local: Cuddalore, Tamil Nadu | 8.520 |
| 1.8 | KHEL & KUDH - Sports & Paralympics. | Local: Cuddalore, Tamil Nadu | 3.729 |
| SUBTOTAL: Others like environmental sustainability, Heritage, Art, Culture, Sports etc. | | | 30.480 |
| 1.9 | RAHATH OWR PUNASTHAN - Relief and Rehabilitation | Other: States of Andra- pradesh, Odisha and Jammu & Kashmir | 405.000 |
| 1.10 | ANUSANDHAN - Research and incubation | Other: India | 101.423 |
| SUBTOTAL: Contributions to Relief and Rehabilitation of Disaster- stricken areas, Research/ Incubation | | | 506.423 |

| | | | |
|---|--|---|-----------------|
| 2. | GRAMIN VIKAS - Rural Development | | |
| 2.1 | JALA PARYAPTHA:- Water Resource Augmentation. | Local: Cuddalore, Tamil Nadu | 1096.945 |
| 2.2 | BUNIYAAD - Community Assets | | |
| 2.2.1 | DHORA - Roads and Access. | Local: Cuddalore, Tamil Nadu and Bikaner, Rajasthan | 1178.207 |
| 2.2.2 | SAMOOH SAMPATTHI - Community Assets. | Local: Cuddalore, Tamil Nadu and Bikaner, Rajasthan | 23.836 |
| SUBTOTAL: Rural Development Projects | | | 2298.988 |
| TOTAL | | | 4749.420 |

Financial Components of NLC's CSR Activities for the Year 2015-16
(All figures are in crores of Rs.)

| Description | Particulars |
|--|---|
| Profit Before Tax for the year 2012-13 | 2047.65 |
| Profit Before Tax for the year 2013-14 | 2209.13 |
| Profit Before Tax for the year 2014-15 | 2383.33 |
| Total of the above three years | 6640.11 |
| Average of the above three years | 2213.37 |
| Norm for CSR Budget as per NLC CSR Policy | 2% of Average Net Profit of three preceding years |
| Budget to be allocated as per the above norm | 44.27 |
| Total actual expenditure | 81.93 |
| Expenditure as % of average PBT | 3.70% |

| CSR Focus area | Expenditure in crore |
|--|----------------------|
| Health Care, Family Welfare and Sanitation | 43.81 |
| Providing Drinking Water Supply Facilities | 0.13 |
| Providing Education including Special Education, Scholarships, | 22.93 |

| | |
|---|--------------|
| Construction of educational infrastructure like Schools/ Libraries / Laboratories | |
| Skill Development | 0.21 |
| Women Empowerment / Gender Equality | 0.21 |
| Environmental Sustainability / Animal Welfare / Ecological Balance, Energy Conservation | 0.12 |
| Heritage, Arts, Culture and Sports, Welfare of Army veterans | 0.62 |
| Relief / Rehabilitation of areas Affected by Disasters | 1.01 |
| Water Resource Augmentation, Irrigation and Flood Control Works for Rural Development | 2.87 |
| Providing Link Roads/ Access for Rural Development | 9.85 |
| Other Community Assets for Rural Development | 0.17 |
| Total | 81.93 |

8. REPORTING, MEASUREMENT AND AUDITING CSR PERFORMANCE:

NLCIL believes in "MEASURING TO MANAGE". NLCIL measures the results achieved and the project specific performance from time to time based on the milestones and the related financial and physical targets fixed at the outset. The performance is appraised to the CSR Committee of the Board through the Nodal officer.

Annually, the performance is measured, evaluated, audited and also the immediate impacts are assessed by engaging expert agencies through tendering process. The Annual Evaluation Report on the CSR Activities thus prepared is submitted to the Board for review through the Nodal Officer and the CSR Committee. The same is also submitted to the Ministry of Coal, the Administrative Ministry, as part of the annual MoU evaluation process.

9. SOCIAL IMPACTS OF NLCIL'S CSR IN 2014-15:

9.1. GENERAL:

The key positive impacts of CSR activities in the year 2014-15 is given below:

- 33 Social Infrastructure works:- Drinking Water: 10; Health: 4; Education: 8; Roads: 6; Others: 5.
- 4 Water / Irrigation / Flood Control works
- Education to 12,779 Beneficiaries from youth, including scholarships to 1,310 students from weaker sections for higher education.
- Self Defense Coaching to 9,649 Girl-students
- Comprehensive Health Care to 14,516 Families of Contract Workmen; 1,36,930 instances of Health Care Services to rural public.
- Regular Monthly Supply of Nutritious Food Supplements to 285 HIV +ve Children
- 455 persons trained for Skill / Entrepreneurial Development.

- 176 Executives and 52 Employees Trained in CSR.
- SNEHA Opportunity School Serving as Day-care, Education and Skill Development Centre for the 81 Special Children on roll.
- Contributed to NLCIL Chair on CSR for Strategic CSR and sustainability.
- Various Sports and Cultural Activities.

Gender and weaker sections inclusion among beneficiaries in various activities is maintained at higher levels (ranging from 50% to 100%).

Details of value added to Society through NLCIL's CSR is Given in the **Annexure**.

9.2. MAJOR CONTRIBUTIONS TO THE SOCIETY:

The major works completed recently and dedicated to the society in the most topical sectors are worth a separate mention.

The works of construction of 1,414 toilets under "SWACHH VIDYALAYA ABHIYAN" was undertaken and completed by NLCIL within a short spell of 1 year from 02.10.2015 in direct execution mode, at widely-spread sites in 30 Districts of Tamil Nadu and 2 Districts of Rajasthan.

The mega project work of "De-silting of Walajah Lake in Karaimedu Hamlet near NLCIL's Mine-II under the project "JALA PARYAPTHA" was also completed in 2014-15, to aid in water & food security and flood control. This has immensely benefited the agrarian communities in 83 hamlets. The social impacts of this work are given below.

- Water Security ensured even during non-monsoon season by the increase in the capacity of lake by 22.75 lakh cubic meters.
- Water Security for 16,121.14 Ha. of cultivable lands in 43 Panchayats ensured.
- Ayacut (Stock Lands irrigated by the lake water) increased by 9.6% from 7,028.26 Ha. to 7,773.85 Ha.
- Potential of 1,933.07 Ha of un-irrigated lands in the tail-end and other relatively marginal areas to become irrigated lands in the long run is enhanced by increased water flow, enhanced recharge and elevated ground water table.
- Regulation of water for irrigation improved by repairing 12 sluices and aprons, including the replacement of the difficult and unsafe circular shaft type sluices with open head and open wing-wall type sluices.
- Bunds strengthened and made motorable for ready access to sluices / regulators, improved & timely operations and also flood-control.
- Enhanced Food Security through Water Security for Paddy, Sugarcane and other crops in 7773.85 Ha. of irrigated area.
- Environmental Sustainability:-
 - ✓ Water sufficiency necessary for environmental sustainability is ensured.
 - ✓ 9 numbers of islands with greenery have been developed in the lake-bed area on the dumped mounds to attract the birds.
 - ✓ The green development of the region and promotion of flora and fauna is achieved.

- ✓ Teak trees planted by Forest Department in the bund slopes on the request of NLCIL, adding also to the strength and stability of bund.
- A Rural population of 76,688 in 19,454 households / 83 hamlets / 40 revenue villages / 3 Community Development Blocks in Cuddalore District of Tamil Nadu are immensely benefitted. 45.0% of them belong to the Scheduled Caste / Scheduled Tribes Category, as against their proportion of 26.7% in the District.
- Agrarian Communities got benefitted at large. 30,027 persons comprising of cultivators and agricultural labour got benefitted directly. They constitute 70.8% and 84.2% respectively among the main and marginal workers. They represent 77.8% of total working population of 38,579 and 39.2% of the total population of 76,688 in the 83 hamlets that are benefitted.
- Supply of mine surplus-water for irrigation through Walajah lake is continuing.
- Being a typical project, the same can be replicated in any area with existing surface water management and irrigation system for enhanced rain water harvesting and ground water recharge, adopting the methods developed.

10. CONCLUSION:

NLCIL's Holistic & structured approach to CSR and Sustainability, is aligned with Nation-building Goals. They adopt innovative strategies and create measurable impacts, with effective stakeholder engagement, communication and attitude. NLCIL is an exemplar of good CSR practice, having a robust Policy, addressing emerging economic, social and environmental issues. The ingrained CSR processes with progressive budget, its full utilization for inclusive growth through Infrastructure and Human Development in the operating regions sets NLCIL deeply in the society. They are keeping abreast in the CSR front.

--**--

GLIMPSES OF NLCIL's CSR PROJECTS



Promoting Education & Special Education (Contd.)



Inauguration of a School Building constructed by NLC, under CSR

12

Neyveli Lignite Corporation
A Navratna – Government of India Enterprise



Koussal Vridhi - Skill Development – Rs. 0.18 Cr.



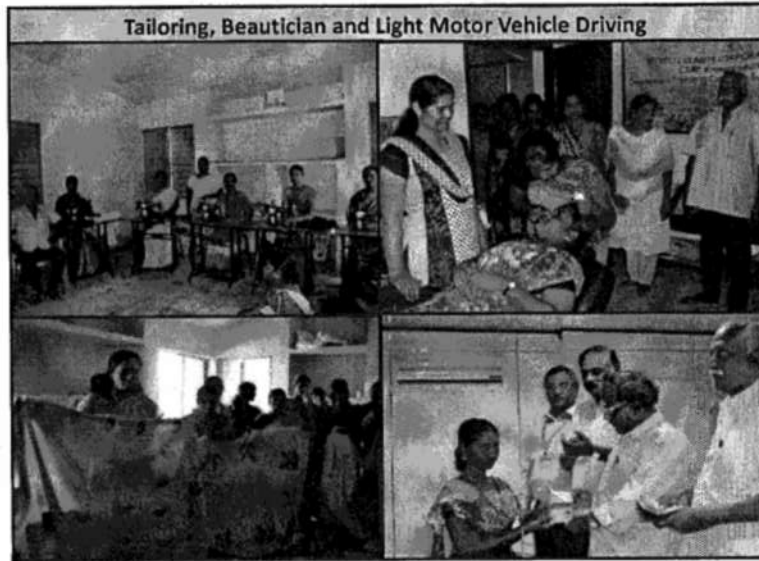
290 persons trained

13

Neyveli Lignite Corporation
A Navratna – Government of India Enterprise



Praveen Sthree – Empowered Woman – Rs. 0.08 Cr



165 Women trained

14

Neyveli Lignite Corporation
A Navratna – Government of India Enterprise



Water Resource Augmentation, Irrigation and Flood Control Works for Rural Development

De-silting Walajah Lake under JALA PARYAPTHA Project

Value of work - Rs. 14 Cr.

300 acres of Lake area de-silted

22.75 Lakhs Cubic Meter earth removed for increased Capacity.

Bund Strengthened and 12 sluices repaired.

Agrarian Community in 83 hamlets Benefited – 30,027 Direct Beneficiaries

9.6% increase in Ayacut (Stock of lands irrigated by lake water)

Water Security for 16,121 Ha. of cultivable lands ensured

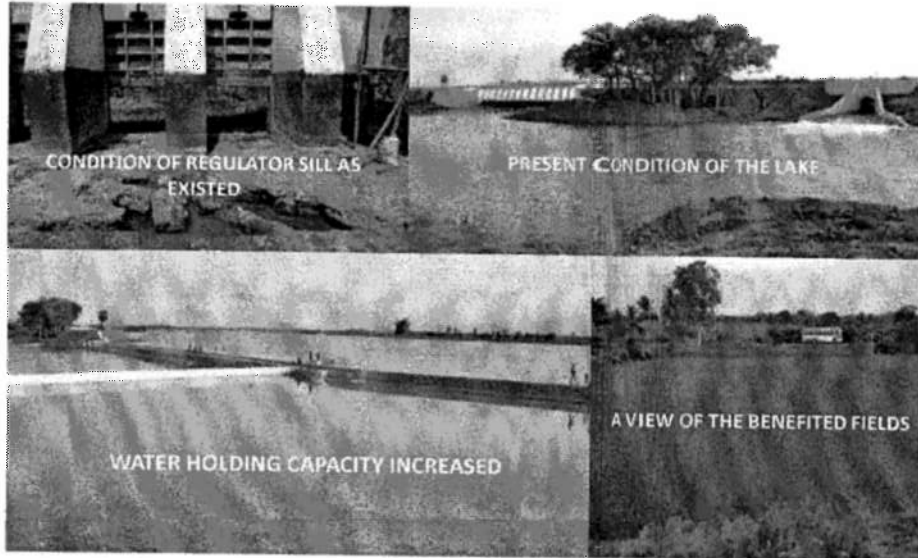
Continuous supply of mine surplus water to irrigate cultivable lands.



15



De-silting of Walajah Lake - Glimpses



16

Neyveli Lignite Corporation
A Navratna – Government of India Enterprise

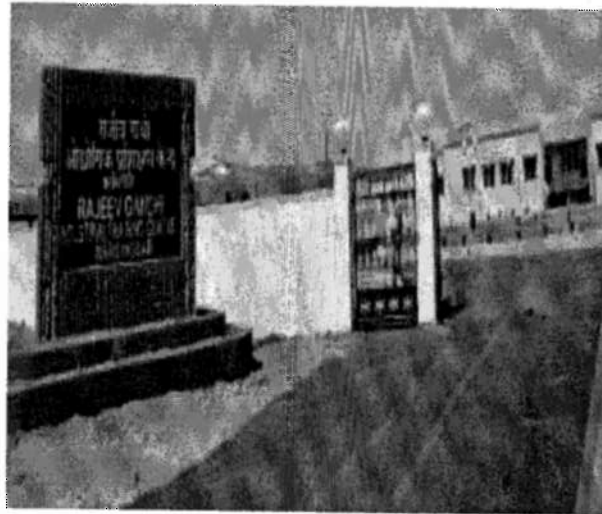


NLC's CSR Activities in Rajasthan

Infrastructure works and supply of equipment/tools for the ITI completed at Barsingsar, Rajasthan State:-

166 students trained in Electrician, Horticulture, Fitter and Welder Trades in 2014-15.

Total Expenditure on CSR for the last four years Rs.11.30 Cr., including other infrastructure projects like roads, School Building etc



17

Neyveli Lignite Corporation
A Navratna – Government of India Enterprise



CSR & Sustainability Awards Won by NLC

- **Greentech CSR Award – Platinum Category (2015), Gold Category (2014) ; Silver Category (2013)**
- **Indian Mining Engineering Journal Award for State-of-the-art Mining Technology with Effective CSR (2014)**
- **BT Star CSR Award (2014.)**
- **Public Relations Society of India National Award for Best CSR (2014)**
- **Institute of Public Enterprises CSR Corporate Governance Award (2012)**
- **Government of Tamil Nadu Cash Award for CSR - Rs. 5 Lakhs (2010)**
- **Business World CSR Award (2006)**
- **SCOPE Meritorious Award for CSR (2005)**



18

Neyveli Lignite Corporation
A Navratna – Government of India Enterprise

---**---

ANNEXURE

VALUE ADDED / IMMEDIATE IMPACTS MADE BY NLCIL's CSR IN THE YEAR 2014-15:

In abstract, the value of the social work done by NLCIL as per its CSR Policy in the year 2014-15 is reflected by the CSR Expenditure of Rs.47.49 Cr., which is 2.28% of the average net profits of NLC in the three immediately preceding years, as against the stipulated norm of 2%.

The value added by NLCIL's CSR to the society at its grass root level and the details of immediate impact made by its projects in the year 2014-15, in terms of the benefits to the community in the villages and the society at large are given below:-

| (1) | (2) | (3) |
|-------|--|---|
| S. No | CSR project undertaken or activity Carried out | Benefits to village communities and the society at large. |
| 1 | SAMOOH UNNATHI - COMMUNITY DEVELOPMENT | |
| 1.1 | SWASTHIYA SAMUDAY - Healthy Community | |
| 1.1.1 | NLCIL - Arogyaa Camps | <ul style="list-style-type: none"> • Free Multi Specialty Medical Camps in 12 peripheral villages (Viz., : Periyakappankulam, Iruppu, Thaliakulam, Uyyakondravi, Thenkuthu, Veppur, Keelakuppam, Pinnalur, Mettukuppam, Azhichikudi, Kathazhai, Periyakoilkuppam H/o Keelur) located in the area surrounding Neyveli Township in Cuddalore District <ul style="list-style-type: none"> - Health Screened and given medical advice and medicines: 4962 persons (Gender Inclusion Ratio: 55.2%) - Random Blood Sugar Tests taken: 713 persons - Electro Cardio Grams screened : 239 persons - Distribution of spectacles : 439 persons - Hospitalised treatment : 428 Persons |
| 1.1.2 | POSHAK- Nutritious Food Supple-ments | <ul style="list-style-type: none"> • Provided supplementary nutrition to 285 HIV affected children of Cuddlore District. |
| 1.1.3 | ILAAJ OWR SWACCHATH A - Health Care & Sanitation | <ul style="list-style-type: none"> • Comprehensive Health Care treatment to all the eligible contract workmen and their family members. • Free medical consultation with minimum anti-biotic therapy and vitamins in 86,921 cases to out-patients from the rural public. • Emergency treatment for various causes to 32574 patients. • Community Health screening for Diabetes, Hypertension and HIV during the Annual Book Fair and Safety Week Celebration: 12,473 persons Health Screened. • Construction of New Building for Health Sub Centre at Gangaikondan village in Cuddalore District. • 2 numbers of 5KVA diesel generator set provided in primary health centres at Palana & Barsingsar • Physiotherapy Equipments provided at Bits Pilani for the Local Community • Gynaecology Table, Operation Theatre Table & , Operation Theatre Light provided to the Primary Health Centre, |

| (1) | (2) | (3) |
|-------|--|--|
| | | <p>Lalamdesar village.</p> <ul style="list-style-type: none"> Construction of Toilet Blocks for Government High and Higher Secondary Schools under "Swachh Vidyalaya Abhiyan" - Work commenced. |
| 1.1.4 | PACCA PANI - Safe Drinking Water | <ul style="list-style-type: none"> Construction of Overhead Water Tanks in Vadakuthu, Marungur, Vadakkuvellore, U.Agaram, Gangaikondan villages. Drilling of Bore-wells in Vadakuthu, Marungur, Ammeri, Periyakappankulam, Nadukuppam villages. |
| 1.2 | SIKSHITH SAMAAJ - Educated Society | |
| 1.2.1 | TAALEEM - Formal Education to Children and Youth | <ul style="list-style-type: none"> 10 Schools run under NLCIL Management - 2 Elementary Schools, 3 Middle Schools, 2 High Schools and 3 Higher Secondary Schools. Infrastructure and running expenses provided to Kendriya Vidyalaya (High School) <ul style="list-style-type: none"> ✓ 7223 students on Roll; External Stakeholders Inclusion Ratio: 90.6%; Gender Inclusion Ratio: 58.3% ✓ <u>Children</u>: 40.3%; Gender Inclusion Ratio: 54.9% ✓ <u>Youth</u>: 59.7%; Gender Inclusion Ratio: 60.6% Painting works done and provided Sports Items and green chalk board for the Government School at Barsingsar village and 171 numbers of School Bags provided to students of Govt Schools at Barsingsar and surrounding villages Provided a Water Cooler for and an Almirah for School, Lalamdesar village Construction of Laboratories for Government Higher Secondary Schools at Iruppu and Erumbur Villages. Construction of School Building with 3 Class rooms in Government Higher Secondary school, Periyakappankulam. Additional four Class rooms for NMJ School at Neyveli. Construction of 6 Class Rooms for the Government Higher Secondary school at Kammapuram village Construction of 3 class room building in first floor of the Govt. High School at Keelakuppam village Construction of toilet for NLC Higher Secondary School Mandarkuppam Colony |
| 1.2.2 | VIJAYA SOPAN - (Vetripadi) | <ul style="list-style-type: none"> Beneficiaries Profile: <ul style="list-style-type: none"> ✓ 350 Students from 16 Tamil Medium Schools, entering Secondary School Leaving Standard. ✓ Weaker Sections (SC / ST / MBC / OBC) Inclusion Ratio: 98.8% ✓ Gender Inclusion Ratio: 59.1 % |
| 1.2.3 | PHALAPRAD BHAVISHYA (Vetrikanni Kittium) | <ul style="list-style-type: none"> 3725 Students from Neyveli and 14 peripheral village schools imparted Motivational and Exam Skills training. ✓ Weaker Sections (SC / ST / MBC / OBC) Inclusion Ratio: 99.5% ✓ Gender Inclusion Ratio: 58% |
| 1.2.4 | SAHAYATHA - Scholarships. | <ul style="list-style-type: none"> 1,212 Students studying in Jawahar Science College Neyveli provided with Scholarship for Bachelor and Post-graduate Degree Courses in Arts and Science subjects. |

| (1) | (2) | (3) |
|-------|---|---|
| | | <ul style="list-style-type: none"> • 73 Students who are wards of contract workmen provided with scholarship for professional degree courses in various institutions. • 25 Students who are wards of contract workmen provided with scholarship for arts and science degrees / Diploma courses in various institutions. ✓ Weaker Sections (SC / ST / OBC) inclusion Ratio: 100% ✓ Gender Inclusion Ratio: 53.3% |
| 1.3 | ASHRAY - Support Services. | |
| 1.3.1 | SNEHA Special Education | <ul style="list-style-type: none"> • 81 Special Children in Sneha Opportunity School, Neyveli provided with day care, education and skill training services. • Semi automatic paper cup making machine provided to Sneha Opportunity School, Neyveli to commence the training in the new trade. |
| 1.4 | JEEVIKA - Livelihood | |
| 1.4.1 | NIPUNATHA Vocational Skills - Technical Trades | <ul style="list-style-type: none"> • 166 Students provided with technical education and training in the ITI trades of Electrician, Horticulture, Welder and Fitter in the In the Rajiv Gandhi Industrial Training Institute, Barsingsar. (Running expenses met from and out of the income from corpus fund already provided by NLC.). Maintenance of the ITI undertaken by NLCIL under CSR. ✓ Weaker Sections (SC / ST / OBC) Inclusion Ratio: 94.6% |
| 1.4.2 | KOUSAAL VRIDHI Vocational Skills | <ul style="list-style-type: none"> • 290 persons provided with Skill Development Training in the trades of Light Motor Vehicles Driving, Heavy Transport Vehicles Driving, Conventional Mining / Earth Moving Equipment Operations and Vulcanizing. • 3089 persons from students, teachers and general public provided with training in various programs, viz., Computer Basics, Energy Conservation, Global Warming, Road Safety Awareness, Safe Driving Practices (for Van Drivers), Counselling Skills for Teachers, Skill Development for Teachers, Sustainability Development. |
| 1.5 | STHREE SAMANTHA - Gender Equality | |
| 1.5.1 | VATI Girl Child | <ul style="list-style-type: none"> • 75 Numbers of Baby kit and sleep kit etc for new born baby Girls. • 9649 Girl-Children of Neyveli Schools given Self Defense Coaching. |
| 1.5.2 | PRAVEEN STHREE- Empowered Woman | <ul style="list-style-type: none"> • 165 Women from Neyveli local and surrounding areas imparted skill development training in Light Motor Vehicle Driving, Beautician, Tailoring Trades. |
| 1.6 | SATHVAA - Natural Entities | |
| 1.6.1 | JEEV HITH - Animal welfare | <ul style="list-style-type: none"> • Construction of cow-stable in Barsingsar Village. |
| 1.7 | VIRAASATH, KALA OWR SAMSKRITHI:- Heritage, Art & Culture. | |
| 1.7.1 | NAVEENKARA N- Renovation / Protection of Heritage | <ul style="list-style-type: none"> • Renovation works in the Heritage Building of Old District Board Office Building at Cuddalore. • Contributed funds to the National Culture Fund towards tourist development project in Archaeological Survey of India Site |

| (1) | (2) | (3) |
|-------|--|---|
| | Structures | |
| 1.7.2 | VAARDHAT - Socio Cultural Events. | <ul style="list-style-type: none"> • Participated in Dawn Festival (Vidiyal Vizha) organized by the District Administration in the Beach near Chidambaram • Inaugurated Peoples Service Group Activity Centre in Neyveli • World Theatre Day Celebrated • International Women's Day Celebrated |
| 1.8 | KHEL & KUDH - Sports & Paralympics. | <ul style="list-style-type: none"> • Training imparted in Sports Activities among students hailing from Neyveli and the surrounding areas |
| 1.9 | RAHATH OWR PUNASTHAN - Relief and Rehabilitation relating to Disasters | <ul style="list-style-type: none"> • Contribution made towards the relief and rehabilitation of areas of Jammu & Kashmir State affected by unprecedented Floods. • Contribution made towards the relief and rehabilitation of areas of Andhra Pradesh State affected by Hudhud Cyclone • Contribution made towards the relief and rehabilitation of areas of Odisha State affected by Hudhud Cyclone • Reconstruction of Igoo Village in Leh District, Jammu and Kashmir State devastated by the cloudburst, flash floods and consequent landslide. |
| 1.10 | ANUSANDHAN - Research and Incubation | <ul style="list-style-type: none"> • Provided Corpus fund to the "NLC Chair on CSR" Instituted for carrying out research, workshops / seminars and other promotional activities for furtherance of the cause of CSR and to provide policy inputs (on CSR) to the Industry as well as to the Government. |
| 2 | GRAMIN VIKAAS-Rural Development | |
| 2.1 | JALA PARYAPTHA-Water Resource Augmentation. | <ul style="list-style-type: none"> • De-silting of Periya Eri (Lake) in Kurinjipadi village: water holding capacity for irrigation increased by 2.23 lakh cubic meter. • Major work of de-silting Walajah Karaimedu, Hamlet of Thalakulam (South) near Neyveli: <ul style="list-style-type: none"> ✓ 22.75 Lakh Cubic meter earth removed from 300 acres of Lake-bed area to increase the water holding capacity. ✓ Bund strengthened. ✓ 12 sluices repaired ✓ Benefiting about 60 villages in the region ✓ Direct Irrigation for 11,580 Acres through 11 Sluices ✓ Irrigating another 5,780 acres through Perumal Lake Supply sluice. ✓ Surplus adding to downstream irrigation ✓ Ground water position improved. • Retaining wall for flood protection near Kalkunam village • Check Dam across Sengal Odai near Kalkunam • Continuous supply of Mines-water to nearby villages for irrigating over 23,000 acres of land in the Neyveli region. |
| 2.2 | BUNIYAAD-Infrastructure | |
| 2.2.1 | DHORA - Roads and Access. | <ul style="list-style-type: none"> • Laying Black Topped Road for Seduthankuppam Village • Laying of Black Topped Road from Umangalam Village to Kunankurichi village. • Laying Cement Concrete Road & Drain for Sorathur Village |

| (1) | (2) | (3) |
|-------|---|---|
| | | <ul style="list-style-type: none"> • Laying of link roads at three locations from Basi-Barsingsar village to the existing Black Topped Road, with beII mouths at six locations. • Provided affordable access of social facilities of Neyveli Township to the peripheral villagers and connecting services by NLC Bus service. |
| 2.2.2 | SAMOOH SAMPATTHI - Community Assets. | <ul style="list-style-type: none"> • Compound Wall for the Office of the Superintendent of Police, Cuddalore • Veludaiyanpattu village Temple Kulam (Tank) Improvement works • Office Building for Agricultural Department at Arasakuzhi Village |

--**--

