

## **Development of Chittoor Node-Chittoor South Cluster Start-up Area as a part of VCICDP**

### **Annexure B - Alternative Site Analysis.**

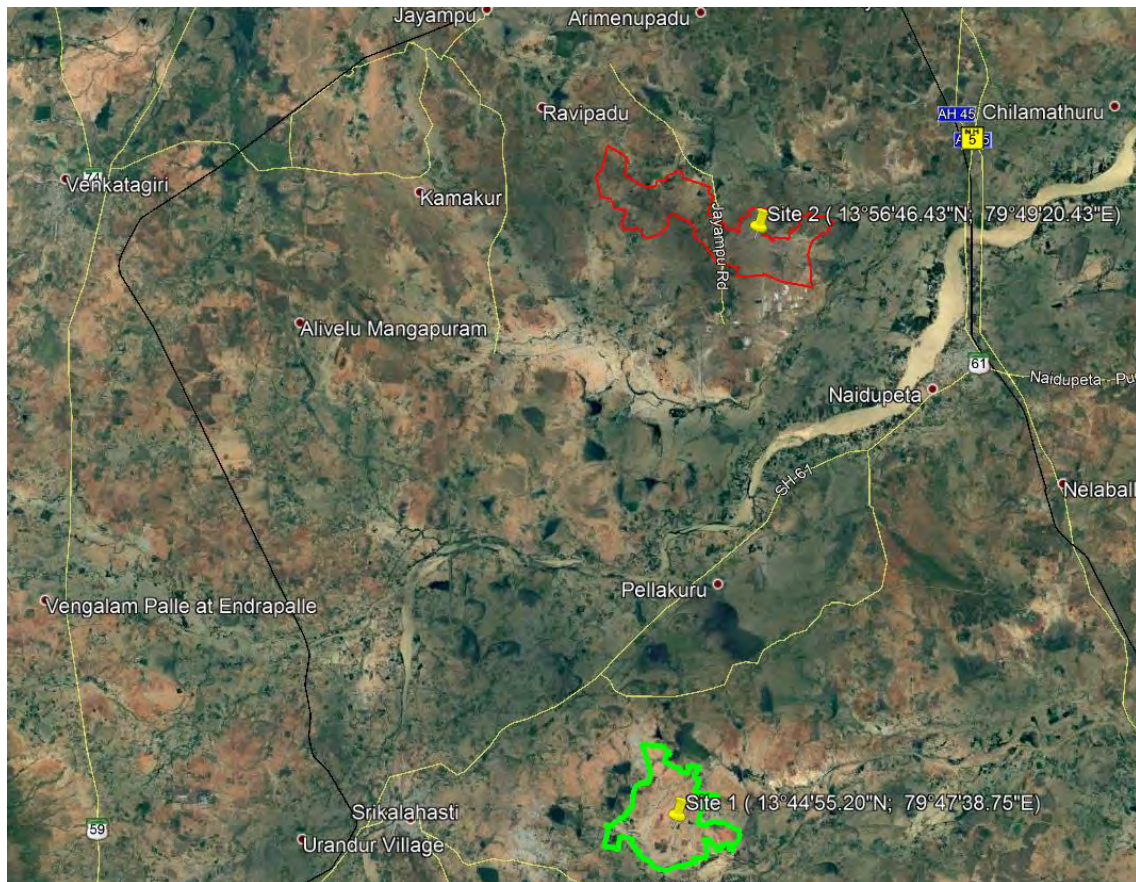
India has five major economic corridors under various stages of development. Among them is the East Coast Economic Corridor (ECEC), touted India's first coastal economic corridor and stretches about 2,500 kilometers along the country's eastern coast — from Kolkata in the north to Kanyakumari in the south — traversing the four states of West Bengal, Odisha, Andhra Pradesh and Tamil Nadu.

Visakhapatnam–Chennai Industrial Corridor (VCIC), is a key part of the East Coast Economic Corridor (ECEC), India's first coastal corridor. The Visakhapatnam-Chennai Industrial Corridor Development Program (VCICDP) is proposed to support the Government of Andhra Pradesh (GoAP) for infrastructure development, and policy and institutional reforms to stimulate economic growth and employment generation. VCIC is aimed at fulfilling the objectives of the Government of India, Make in India Policy which aimed to promote manufacturing activities.

VCIC Northern part contains Visakapatnam Node where in Atchuthapuram and Nakkapalli Cluster was proposed. Following two locations were identified and analysed to select most suitable site location for development of industrial clusters along the VCIC southern part.

- Alternative Site 1: Thottambedu and B.N.Kandriga Mandals, Chittoor District, AP
- Alternative Site 2: Ojili Mandal of SPS Nellore District, AP

The alternative sites are shown in the Figure 5-1.



**Figure 1: Alternative Sites**

## 1.1 Factors Considered for Evaluation

The following important factors were also considered in site evaluation:

- Minimise adverse Environmental and Social impacts
- Suitability of land in terms of topographical and geological aspects.
- Land shall be free from habitation, forest land agricultural activity, and archaeological/historical monuments
- Minimum Rehabilitation and Resettlement (R&R)
- Suitability for phased and integrated development
- Scope for future development
- Site slope and drainage pattern
- Proximity to state/national highway/railway line
- Proximity to sea Ports
- Evaluation in accordance with project objectives and compliance with country laws, policies and legal requirements

Detail	Alternative Site 1	Alternative Site 2
Location	Routhusurumala, Gowdamala, Kothatpalem, Alathuru and B.S.Puram In Thottambedu and B.N.Kandriga Mandals of Chittoor District, AP	Kundam, Karaballavolu, Machavaram, Karuru and ManavaliIn villages in Ojili Mandal of SPS Nellore District, AP
Latitude	13°44'55.20"N	13°56'46.43"N
Longitude	79°47'38.75"E	79°49'20.43"E
Land Availability (acres)	~ 2770 Acres as Start Up area	~ 3730 Acres
Land Use	The land use of the site under consideration is predominantly barren/un culturable/ wasteland (scrub land etc..) and partly agricultural crop/plantations, water bodies/streams/canals, abandoned mining/quarrying area and habitations	The landuse at the site primarily falls in the category of wastelands (scrubs land – dense & open scrub) followed by single crop agricultural land water bodies/streams/canals and habitations.
Road	NH - 71 N – 3 km N NH-16 (AH 45) – 15.0 km E	NH 5 - 6 km East SH 61 – 6.0 km SE
Railway Line (in km)	Srikalahasti R.S – 9.5 km West	Chennai – Howrah trunk rail line - 5.5 km East
Seaports (in km) (Aerial distance)	Krishnapatnam port - ~70 km Ennore port - ~80 km Chennai port - ~90 km	Krishnapatnam port - ~45 km Ennore port - ~95 km Chennai port - ~105 km
Airports (in km) (Aerial distance)	Tirupati – 27 km; Southwest Chennai – 90 km; Southeast	Tirupati – 43km; Southwest Chennai – 115 km; Southeast
Reserve Forest	No Reserve Forest are noticed within 3.0 km.	Attivaram RF abutting
River	Swarnamukhi River ~ 6.0 km N	Swarnamukhi River ~ 4.5 km E
R&R	Minimal (< 35 Households) for Start up Area	More compare to Site 1 (>35 House holds)
Land Acquisition Issues	Less (as the lands are mostly DKT and Government lands and less patta lands)	Moderate compare to Site 1 (as government land is ~56% and Private land is 44%)
Expansion Possibilities	South block site Expandable to 14863 acres North block site of 11,868 acres and is contiguous	No Contiguous land and expansion involves more R&R or Disturbance to existing settlements and Forest lands
Sensitive Areas such as National Parks/Wildlife Sanctuaries/Biospheres within 10 km Radius	Nil	Nil
Natural Hazards	As per the map prepared by Ministry of Urban Development and Poverty Alleviation, the project site is falling in Wind and Cyclone Moderate damage Risk Zone (39 m/s) and Earth Quake Medium Damage Risk Zone and No Flood Zone.	As per the map prepared by Ministry of Urban Development and Poverty Alleviation, the project site is falling in Wind and Cyclone Vey High damage Risk Zone (50 m/s) and Earth Quake Medium Damage Risk Zone and No Flood Zone

**Considering the less natural hazard prone, sufficient Land availability including scope for future expansion, Minimal R&R and land acquisition issues, Involvement of Barren Barren/Uncultivable/Waste land, Better connectivity, sufficient away from river and without ESA, Site 1 (Routhusurumala, Gowdamala, Kothatpalem, Alathuru and B.S.Puram In Thottambedu and B.N.Kandriga Mandals of Chittoor District, AP) has been selected for the Development of Project.**

Some of the important features of the Site making it suitable for development are presented below:

- Srikalahasti South has large and contiguous land parcel suitable for industrial development
- Strategically located near to the neighboring states such as Tamil Nadu, Telangana, Chhattisgarh and Odisha and in the East Coast Economic Corridor (ECEC). The site is proximity to major consumption centers such as Chennai
- The existing industrial hubs in Sricity, Tirupati and Chennai offer synergies for industrial development
- The site is located around 95 km from Chittoor with well-endowed Social and educational infrastructure
- The strategic location of site with good transport facility offers comfortable access to site and other cities of India. The North side approach road is NH 71, an Internal road from the hinterland of the project site joins NH 71 lies outside the project site and the Secondary approach road is Tada - Srikalahasti road (SH - 4437), lies outside the southern part of the project site. Andhra Pradesh Road Development Corporation (APRDC) is planning to develop Link road connectivity NH 71 with the Srikalahasti – Tada Road through the Start-up area
- The nearest Railway station to the project site is at Srikalahasti R.S located at 9.5 km towards W
- Tirupati airport is at a distance of 27.0 km SW and Chennai Airport is at a distance of 90 km SE
- The Nearest Port is Krishnapatnam port is at the distance of ~70 km NE from the project site, Ennore port is at the distance of ~80 km SE from the project site and Chennai port is at the distance of ~90 km SE from the project site
- Water and Power supply can be assured for the proposed IP will be met from Kandaleru Reservoir through approved the Bulk water supply project planned by APIIC aimed to provide reliable and continuous supply of water to the industrial clusters located in Nellore and Chittoor districts of Andhra Pradesh. APSPDCL is responsible for undertaking distribution of Power in Chittoor District.
- No Environmental Sensitive areas such as Wild Life Sanctuary, National parks, Critical Polluted Areas, Biospheres, etc., within 10 km radius from the proposed site.
- The land use of the site under consideration is predominantly barren/un culturable/ wasteland (scrub land & salt affected) and partly agricultural crop/plantations, water bodies/streams/canals, mining/quarrying area and one small habitation which requires Minimal R&R

The site meets the requirement of all critical factors that are important for success of development of Industries and could be a preeminent location.