

**APPLICATION FOR EXTENSION OF TOR VALIDITY
PRIOR ENVIRONMENTAL CLEARANCE (FORM-I)**

For

**THE PROPOSED 5.0 MTPA COAL WASHERY PROJECT
AT BHENGARI VILLAGE, GHARGHORA TEHSIL, RAIGARH DISTRICT,
CHHATTISGARH**

Submitted to:

**Ministry of Environment, Forests and Climate Change
New Delhi**

Mahavir Coal Washeries Private Limited

November 2014

ENCLOSURES

Annexure-I	:	Index map
Annexure-II	:	Study area map
Annexure-III	:	Plant Layout
Annexure-IV	:	Process Details
Annexure-V	:	Process Flow Diagram
Annexure-VI	:	TOR dated 09/02/2012
Annexure-VII	:	Modification of TOR dated 27/04/12
Annexure-VIII	:	Modification of TOR dated 16/12/13
Annexure-IX	:	CECB letter of 22/02/14
Annexure-X	:	MCWPL letter of 05/03/14 to CECB
Annexure-XI	:	CECB letter of 01/04/14

FORM 1**(I) Basic Information**

Sr. No.	Item	Details
1	Name of the project/s	Setting up of 5.0 MTPA Coal Washery at Bhengari village, Gharghora Tehsil, Raigarh District, Chhattisgarh
2	S. No. in the schedule	2 (a)
3	Proposed capacity/ area/ length/ tonnage to be handled/ command area/ lease area/ number of wells to be drilled	<p>5.0 MTPA Coal Washery</p> <p>The proposed coal washery will be set up with two identical modules of 2.5 MTPA in two phases</p> <p>Total Area: 54.84 acres excluding approx. 10 acres for railway siding</p> <p>Cost of the project : Rs. 54.15 crores plus Rs. 15 crores for railway siding</p> <p>Index map and Study area map are shown in Annexure-I and II. Plant layout is given in Annexure-III.</p>
4	New/Expansion	New project
5	Existing Capacity/ Area etc.	Not applicable
6	Category of Project i.e. 'A' or 'B'	Category 'A'
7	Does it attract the general condition? If yes, please specify.	Not applicable
8	Does it attract the specific condition? If yes, please specify.	Not applicable
9	Location	<p>Geographical Co-ordinates :</p> <p>Latitude : 22°08'2.39" - 22°08'19.41" North</p> <p>Longitude: 83°14'30.21" - 83°14'50.01" East</p> <p>[Toposheet no. 64 N/4 & N/8]</p>
	Plot/ Survey/Khasra No.	Khasra No 6/1, 6/2, 7, 8/1, 8/2, 9/1, 9/2, 9/3, 9/4, 9/5, 9/6, 10/1, 10/2, 10/3, 10/4, and 11
	Village	Bhengari, Post – Navapara-Tenda
	Tehsil	Gharghora
	District	Raigarh
	State	Chhattisgarh
10	Nearest Railway Station Airport (along with distance in km)	<p>Railway station : Robertson (17.2-km, SSW)</p> <p>Airport : Raipur (195-km, SW)</p>
11	Nearest town, city, district Headquarters along with distance in km	<p>Gharghora (11.4-km, NE)</p> <p>Raigarh (50-km, SE)</p>
12	Village Panchayats, Zilla Parishad,	Gram Panchayat

Sr. No.	Item	Details
	Municipal Corporation, Local body (complete postal addresses with telephone nos. to be given)	Village – Bhengari Post – Navapara - Tenda, Tehsil – Gharghora, District – Raigarh [Chhattisgarh]
13	Name of the applicant	M/s Mahavir Coal Washeries Private Limited
14	Registered Address	C/o Mahavir Coal Corporation, 261, Shankar Nagpur 2 nd Lane, Behind Park, Nagpur – 400 010 Ph: 0712-2554865
15	Address for correspondence	
	Name	Mr. V. K. Jain
	Designation (Owner/Partner/CEO)	Director
	Address	"Mahavir Inspire House" Behind Pt. Dindayal Garden, Vyapar Vihar, Bilaspur, Chhatisgarh 495001
	Pin Code	495001
	E-mail	mecbl@yahoo.co.in
	Telephone No.	07752-261027/29
	Fax No.	07752-404523
16	Details of Alternative Sites examined, if any. Location of these sites should be shown on a toposheet.	TOR for the proposed coal washery was granted by MoEF in February, 2012. Subsequently, "Modification of TOR" was issued on 27/04/12 and 16/12/13 permitting coal transportation by road over period of 5 years or till railway siding comes up whichever is earlier.
17	Interlined Projects	Not applicable
18	Whether separate application of interlined project has been submitted	Not applicable
19	If yes, date of submission	Not applicable
20	If no, reason	Not applicable
21	Whether the proposal involves approval / clearance under: (a) The Forest (Conservation) Act, 1980 (b) The Wildlife (Protection) Act, 1972 (c) The C.R.Z Notification, 1991	No No No
22	Whether there is any government order / Policy relevant / relating to the site	Not applicable
23	Forest land involved (hectares)	None
24	Whether there is any litigation pending against the project and/ or land in which the project is propose to be set	None

Sr. No.	Item	Details
	up (a) Name of the Court (b) Case No. (c) Orders/ directions of the Court, if any and its relevance with the proposed project.	

(II) Activity

1. Construction, operation or decommissioning of the Project involving actions, which will cause physical changes in the locality (topography, land use, changes in water bodies, etc.)

Sr. No.	Information/Checklist confirmation	Yes/ No	Details thereof (with approximate quantities /rates, wherever possible) with source of information data
1.1	Permanent or temporary change in land use, land cover or topography including increase in intensity of land use (with respect to local land use plan)	Yes	The land required for the proposed coal washery is 54.84 acres (22.20 ha). Around 80% of land is under physical possession of the company. Approx. 10 acres of land for railway siding will be needed. With implementation of the proposed project, the land use at the site will change to industrial category.
1.2	Clearance of existing land, vegetation and buildings?	Yes	The present land use is mostly agricultural area but not under cultivation with vegetative cover. About 25 trees are to be cut. Efforts would be made to keep tree falling to a minimum level by optimizing plant layout.
1.3	Creation of new land uses?	Yes	The land use of the proposed project area will be changed to industrial category.
1.4	Pre-construction investigations e.g. bore houses, soil testing?	Yes	Detailed geotechnical investigation at the proposed site will be carried out before starting construction activities.
1.5	Construction works?	Yes	Construction of Coal Washery
1.6	Demolition works?	No	There is no structure at the site.
1.7	Temporary sites used for construction works or housing of construction workers?	Yes	Temporary camp at site to accommodate few workers as most of the workers will be local.
1.8	Above ground buildings, structures or earthworks including linear structures, cut and fill or excavations	Yes	Limited excavation work will be carried out for construction of the civil structures. Some amount of levelling / grading through cut and fill is required to make the land suitable for

Sr. No.	Information/Checklist confirmation	Yes/ No	Details thereof (with approximate quantities /rates, wherever possible) with source of information data
			construction. Above ground structures include the main plant, service buildings etc.
1.9	Underground works including mining or tunneling?	No	Not applicable
1.10	Reclamation works?	No	Not Applicable
1.11	Dredging?	No	No dredging works are involved
1.12	Offshore structures?	No	No offshore structures are involved
1.13	Production and manufacturing processes?	Yes	<p>Coal Washery – 5.0 MTPA</p> <p>Wet process comprising crushing, screening, washing and materials handling. The washery will produce washed coal (yield 44%), middling (yield 47%) and rejects (yield 9%).</p> <p>Washing technology – Heavy Media Cyclone.</p> <p>Process details and Process Flow Diagram are given in Annexure-IV and Annexure-V.</p>
1.14	Facilities for storage of goods or materials?	Yes	Adequate land for storage of raw coal, washed coal etc. will be provided
1.15	Facilities for treatment or disposal of solid waste or liquid effluents?	Yes	<p>a. Solid waste</p> <p>90 TPH rejects (3-4 % carbon and 86.5% ash) will be generated. M/s. Inspire Industries Pvt. Ltd. and M/s. Uttam Galva Metallics Ltd. have shown interest in purchasing the rejects.</p> <p>b. Liquid waste</p> <p>No industrial waste water discharge as the plant will be designed on zero effluent discharge concept.</p> <p>Fines from the process waste water will be recovered by passing the slurry through cyclones, Hi-frequency screen, belt press and thickener. Ultra-fines so collected will be disposed of with the rejects. The recovered water will be recycled back into washing circuit.</p>

Sr. No.	Information/Checklist confirmation	Yes/ No	Details thereof (with approximate quantities /rates, wherever possible) with source of information data
1.16	Facilities for long term housing of operational workers?	Yes	Adequate facilities will be made for the employees
1.17	New road, rail or sea traffic during construction or operation?	Yes	The project site needs to be connected to existing road by adding around 600 m approach road.
1.18	New road, rail, air waterborne or other transport infrastructure including new or altered routes and stations, ports, airports etc?		<p>Railway siding will be established linking the project site to the main railway network</p> <p>A new broad gauge line between Raigrah (Mand Colliery) to Bhupdeopur railway station is being constructed through a joint venture consisting of IRCON International Ltd. and SECL and Government of Chhattisgarh. The project is likely to be completed during the 13th Plan. Presently, the survey work and marking of railway route is under progress.</p> <p>All construction materials and plant & equipment will be brought to project site through existing road network, which is adequate.</p>
1.19	Closure or diversion of existing transport routes or infrastructure leading to changes in traffic movements?	No	No change in existing road network is envisaged.
1.20	New or diverted transmission lines or pipelines?	No	No transmission line, water body and pipeline exist at the project site. As such no diversion of Transmission line or water body or other pipelines is envisaged.
1.21	Impoundment, damming, culverting, realignment or other changes to the hydrology of watercourses or aquifers?	No	Not envisaged
1.22	Stream crossings?	No	There are no streams passing through the project site.
1.23	Abstraction or transfers of water from ground or surface waters?	Yes	<p>Water requirement of the proposed project of about 59 m³/hr will be met from ground water resources with prior approval of the Central Ground Water Board. Applied for NOC in August, 2013. Approval is awaited.</p> <p>The project site falls under safe zone</p>

Sr. No.	Information/Checklist confirmation	Yes/ No	Details thereof (with approximate quantities /rates, wherever possible) with source of information data
			on ground water resource considerations. Stage of ground water development in about 14.71%.
1.24	Changes in water bodies or the land surface affecting drainage or run-off?	No	Drainage of surface run-off will not be affected either during construction or during operational phase.
1.25	Transport of personnel or materials for construction, operation or decommissioning?	Yes	By road network
1.26	Long-term dismantling or decommissioning or restoration works?	No	Not applicable
1.27	Ongoing activity during decommissioning which could have an impact on the environment?	No	Not envisaged
1.28	Influx of people to an area in either temporarily or permanently?	Yes	Temporary influx of about 100 during the construction stage. In operational stage about 70 personnel will be get direct employment.
1.29	Introduction of alien species?	No	Not envisaged
1.30	Loss of native species or genetic diversity?	No	Not envisaged. No forest land is involved.
1.31	Any other actions?	No	Not envisaged

2. Use of Natural resources for construction or operation of project (such as land, water, materials or energy, especially any resources which are non-renewable or in short supply).

Sr. No.	Information/Checklist Confirmation	Yes /No	Details thereof (with approximate quantities/ rates, wherever possible) with source of information data
2.1	Land specially undeveloped or agricultural land (ha)	No	22.20-ha of land for the proposed coal washery project is agricultural area not under cultivation. It is a private land.
2.2	Water (expected source & competing users)	Yes	Estimated water requirement of 59m ³ /hr will be sourced from ground water through bore wells. The area falls in "Safe Zone". Stage of ground water development is 14.71%. Ground water in the area is used by adjoining 12 MW Biomass based power plant and for drinking purpose.

Sr. No.	Information/Checklist Confirmation	Yes /No	Details thereof (with approximate quantities/ rates, wherever possible) with source of information data
2.3	Minerals (MT)	Yes	Raw coal will be sourced from SECL mines, namely, Chhal and Baroud which are located about 13-km & 18-km respectively from the proposed site.
2.4	Construction material – stone, aggregates, and/soil (expected source-MT)	Yes	Cement, sand, stone & steel will be sourced from the local market. Fly ash bricks from the adjoining plant will also be used. Quantities will be worked during detailed engineering.
2.5	Forests and timber (source-MT)	No	Not envisaged
2.6	Energy including electricity and fuels (source, competing users) Unit: fuel (MT), energy (MW)	Yes	Raw coal for beneficiation will be sourced from SECL mines on behalf of the clients. Letters of interest from the parties have been obtained. Power requirement of 5 MVA will be sourced from the State Grid. Standby DG Set of 125 KVA will be provided
2.7	Any other natural resources (use appropriate standard units)	No	Not envisaged

3.0 Use, storage, transport, handling or production of substances or materials, which could be harmful to human health or the environment or raise concerns about actual or perceived risks to human health

Sr. No.	Information/Checklist Confirmation	Yes /No	Details thereof (with approximate quantities/ rates, wherever possible) with source of information data
3.1	Use of substances or materials, which are hazardous (as per MSIHC rules) to human health or the environment (flora, fauna, and water supplies)	Yes	Maximum 100L of HSD in a drum may be stored for running DG set in case of emergency.
3.2	Changes in occurrence of disease or affect disease vectors (e.g. insect or water borne diseases)	No	Not envisaged
3.3	Affect the welfare of people e.g. by changing living conditions?	Yes	More sources of income generation due to ancillary developments in the region. There will be improvement in quality of life of the people residing in surrounding areas.

Sr. No.	Information/Checklist Confirmation	Yes /No	Details thereof (with approximate quantities/ rates, wherever possible) with source of information data
3.4	Vulnerable groups of people who could be affected by the project e.g. hospital patients, children, the elderly etc.,	No	There is no hospital, school or settlement nearby.
3.5	Any other causes	No	Not envisaged

4.0 Production of solid wastes during construction or operation or decommissioning (MT/month)

Sr. No.	Information/Checklist Confirmation	Yes /No	Details thereof (with approximate quantities/ rates, wherever possible) with source of information data
4.1	Spoil, overburden or mine wastes	No	Not applicable
4.2	Municipal waste (domestic and or commercial wastes)	Yes	About 1.0 tonne per month
4.3	Hazardous wastes (as per hazardous waste management rules)	Yes	Diesel, Oil, paint drums / containers etc.
4.4	Other industrial process wastes	Yes	a. Solid waste 90 TPH rejects will be generated. b. Liquid waste No industrial waste water discharge as the plant will be designed on zero effluent discharge concept.
4.5	Surplus product	No	Not applicable
4.6	Sewage sludge or other sludge from effluent treatment	Yes	Organic sludge will be composted and used as manure.
4.7	Construction or demolition wastes	Yes	Small quantity of construction waste is expected during construction phase and the same will be used for land filling.
4.8	Redundant machinery or equipment	No	Not envisaged
4.9	Contaminated soils or other materials	No	Not envisaged
4.10	Agricultural wastes	No	Not envisaged
4.11	Other solid wastes	No	Not envisaged

5.0 Release of Pollutants or any hazardous, toxic or noxious substances to air (kg/hr)

Sr. No.	Information/Checklist Confirmation	Yes/ No	Details thereof (with approximate quantities/ rates, wherever possible) with source of information data
---------	------------------------------------	---------	---

Sr. No.	Information/Checklist Confirmation	Yes/ No	Details thereof (with approximate quantities/ rates, wherever possible) with source of information data
5.1	Emissions from combustion of fossil fuels from stationary or mobile sources	Yes	Besides fugitive dust, there will also be gaseous emissions from vehicles used for transportation of materials
5.2	Emission from production processes	Yes	Fugitive dust
5.3	Emissions from materials handling including storage or transport	Yes	Fugitive dust will be controlled by appropriate measures like Dry Fog Dust Suppression System in crusher and screening area in CHP, regular water sprinkling during loading and unloading of coal on to conveyors, covered belt conveyors, rain guns in coal stock yards, regular water spraying on roads, dust suppression system at transfer points etc.
5.4	Emissions from construction activities including plant and equipment	Yes	Dust, which will be controlled by water sprinkling
5.5	Dust or odours from handling of materials including construction materials, sewage and waste	Yes	Water sprinkling on sand, road etc. to control fugitive dust. There will be no odour causing sources.
5.6	Emissions from incineration of waste	No	Not Envisaged
5.7	Emissions from burning of waste in open air (e.g. slash materials, construction debris)	No	Not Envisaged
5.8	Emissions from any other sources	Yes	Standby DG Set (125 KVA)

6.0 Generation of Noise and vibration, and emissions of Light and heat

Sr. No.	Information/Checklist Confirmation	Yes/ No	Details thereof (with approximate quantities/ rates, wherever possible) with source of information data
6.1	From operation of equipment e.g. engines, ventilation plant, crushers	Yes	Crusher – 85 dB(A) Provision will be made with suitable lining of chutes by noise absorbing materials (HDPE/Hard rubber). Provision of ear muffs will be done. Regular maintenance of the equipment will help in reducing these noise levels.

6.2	From industrial or similar processes	Yes	The expected noise levels will be in the range of 75-85 dB (A).
6.3	From construction or demolition	Yes	Noise levels in the range of 75-95 dB(A) will be generated during construction activities.
6.4	From blasting or piling	No	Not envisaged
6.5	From construction or operational traffic	Yes	During construction: Temporary. During operation: The noise levels are expected to be in the range of about 70-75 dB(A).
6.6	From lighting or cooling systems	No	Not envisaged
6.7	From any other sources	No	Not envisaged

7.0 Risks of contamination of land or water from releases of pollutants into the ground or into sewers, surface waters, groundwater, coastal waters or the sea

Sr. No.	Information/Checklist Confirmation	Yes/No	Details thereof (with approximate quantities /rates, wherever possible) with source of information data
7.1	From handling, storage, use or spillage of hazardous materials	None	Not applicable
7.2	From discharge of sewage or other effluents to water or the land (expected mode and place of discharge).	No	Zero effluent discharge has been planned. The sewage wastewater will be treated and used for greenbelt development.
7.3	By deposition of pollutants emitted to air into the land or into water	None	--
7.4	From any other sources	No	Not envisaged
7.5	Is there a risk of long term build up of pollutants in the environment from these sources?	No	Not envisaged

8.0 Risk of accidents during construction or operation of the project, which could affect human health or the environment

Sr. No.	Information/Checklist Confirmation	Yes/No	Details thereof (with approximate quantities /rates, wherever possible) with source of information data
8.1	From explosions, spillages, fires etc from storage, handling, use or production of hazardous substances	None	--

Sr. No.	Information/Checklist Confirmation	Yes/No	Details thereof (with approximate quantities /rates, wherever possible) with source of information data
8.2	From any other causes	None	--
8.3	Could the project be affected by natural disasters causing environmental damage (e.g. floods, earthquakes, landslides, could burst etc)?	No	The proposed project site falls in zone-II as per IS 1893 (Part-I): 2002, indicating that the site is seismically stable zone. Also, the site does not fall under flood prone or landslide prone areas. Hence, negligible risk due to natural hazards is envisaged.

9.0 Factors which should be considered (such as consequential development) which could lead to environmental effects or the potential for cumulative impacts with other existing or planned activities in the locality

Sr. No.	Information/Checklist Confirmation	Yes/No	Details thereof (with approximate quantities /rates, wherever possible) with source of information data
9.1	Lead to development of supporting, facilities, ancillary development or development stimulated by the project which could have impact on the environment e.g.: Supporting infrastructure (roads, power supply, waste or waste water treatment, etc) Housing development Extractive industries Supply industries Other	 Yes No Yes Yes Yes	Supporting and ancillary development will take place. These facilities will be developed Indirect effect, building of houses Envisaged Ancillary activities will increase Development of relatively backward areas
9.2	Lead to after use of the site, which could have an impact on the environment	No	Not envisaged.
9.3	Set a precedent for later developments	Yes	Small ancillary industries may develop as a

Sr. No.	Information/Checklist Confirmation	Yes/No	Details thereof (with approximate quantities/rates, wherever possible) with source of information data
			consequence.
9.4	Have cumulative effects due to proximity to other existing or planned projects with similar effects	Yes	Insignificant increase in particulate matter is expected.

(III) Environmental Sensitivity

Sr. No.	Areas	Name/ Identity	Aerial distance (within 15 km) Proposed project location boundary
1	Areas protected under international conventions, national or local legislation for their ecological, landscape, cultural or other related value	None	Not applicable
2	Areas which are important or sensitive of ecological reasons – wetlands, water courses or other water bodies, coastal zone, biospheres, mountains, forests	<p><u>Water Bodies</u></p> <ul style="list-style-type: none"> • Kurket river (3.6 km, ESE) • Rabo dam (7.0-k, S) • Mand river (13.6-km, WSW) <p><u>Forest Blocks:</u> There are 18 forest blocks existing in 15-km radius from project site which includes 13 reserved forests and 5 protected forests.</p> <p><u>Reserved Forests</u></p> <ul style="list-style-type: none"> • Suhai RF (2.4-km, S) • Marpahar RF (2.8-km, NE) • Dhumapahari RF (2.5-km, W) • Lamikhair RF (1.9-km, WNW) • Lotan RF (3.5-km, SW) • Bojia RF (5.2-km, NW) • Rabo RF (8.0-km, S) • Kuret RF (7.4-km, NE) • Samaruma RF (8.5-km, SE) • Taraimal RF (10.3-km, SE) • Pachpedi RF (10.4-km, NW) • Rabo Dongri RF (10.5-km, NNE) • Garainbahari RF (11.0-km, WNW) <p><u>Protected Forests</u></p> <ul style="list-style-type: none"> • Bhengari PF (1.3-km, S) • Chhindpani PF (1.5-km, ENE) • Katangi PF (2.2-km, NE) • Panikhet PF (2.9-km, S) • Nawagarh PF (4.5-km, NNE) 	
3	Areas used by protected, important or sensitive species	None	Not applicable

Sr. No.	Areas	Name/ Identity	Aerial distance (within 15 km) Proposed project location boundary
	of flora or fauna for breeding, nesting, foraging, resting, over wintering, migration		
4	Inland, coastal, marine or underground waters	None	<u>Water Bodies</u> <ul style="list-style-type: none"> • Kurket river (3.6 km, ESE) • Rabo dam (7.0-k, S) • Mand river (13.6-km, WSW)
5	State, National boundaries	None	Not applicable
6	Routes or facilities used by the public for access to recreation or other tourist, pilgrim areas.	State Highway	9.4-km, ESE
7	Defence installations	None	Not applicable
8	Densely populated or built-up area	Gharghor a town	11.4-km, NE
9	Areas occupied by sensitive man made land uses (hospitals, schools, places of worship, community facilities)	Yes	There are few public health centres, schools and temples in the study area.
10	Areas containing important, high quality or scarce resources (ground water resource, surface resources, forestry, agriculture, fisheries, tourism, minerals)	None	Not applicable
11	Areas already subjected to pollution or environmental damage. (those where existing legal environmental standards are exceeded)	None	Not applicable
12	Areas susceptible to natural hazard which could cause the project to present environmental problems (earthquakes, subsidence, landslides, erosion, flooding or extreme or adverse climatic conditions)	None	There is no history of landslide and subsidence. The project site falls in Seismic Zone-II. There no major water bodies near to project site to cause flooding. The nearest river Kurket is around 3.6-km from the project site.

Terms of Reference:

The then Ministry of Environment & Forests granted TOR for the coal washery proposed at village Bhengari, Gharghora Tehsil, Raigarh District, Chhattisgarh on 9th February, 2012. Subsequently, two "Modification of TOR" letters were issued on 27/04/12 and 16/12/13. All these letters are at **Annexure – VI, VII & VIII**.

The draft EIA / EMP report prepared in accordance with the Terms of Reference (TOR) letters was submitted to the Chhattisgarh Environment Conservation Board (CECB), Raipur on 31.01.14 with the request to arrange public hearing. CECB on 22nd February,

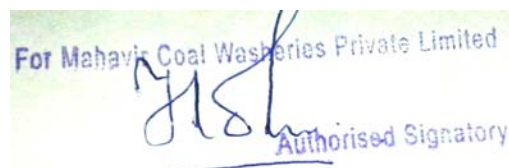
2014 **[Annexure-IX]** directed MCWPL to provide Hindi version of the entire draft EIA / EMP report and kept decision on public consultation date pending. As there is no such provision in the EIA Notification of 2006 and its subsequent amendments to provide the entire EIA/EMP report in Hindi or in any other regional language, we requested CECB on 05.03.14 **[Annexure – X]** to do with the Hindi version of Executive Summary of EIA report already submitted to them as per the EIA Notification and conduct public hearing. CECB on 01.04.14 reiterated its stand asking for 10 copies of the draft EIA report in Hindi **[Annexure – XI]**. Complying with the directions, we submitted the requisite number of copies of Hindi version of the draft EIA report on 23rd May, 2014 to CECB and requested them to conduct public hearing at the earliest.

Public hearing for the said project got delayed due to the Assembly elections in the State. Presently, the officers of the District Level Administration & Police including CECB are busy with the local Municipal elections. The public hearing is likely to be held in the month of January / February 2015.

As the proposal is for extension of validity of TOR, which is expiring in February 2015, for a period of one year, no fresh TOR is proposed for the project. The requested extension will facilitate completion of public hearing and submission of final EIA for grant of environmental clearance.

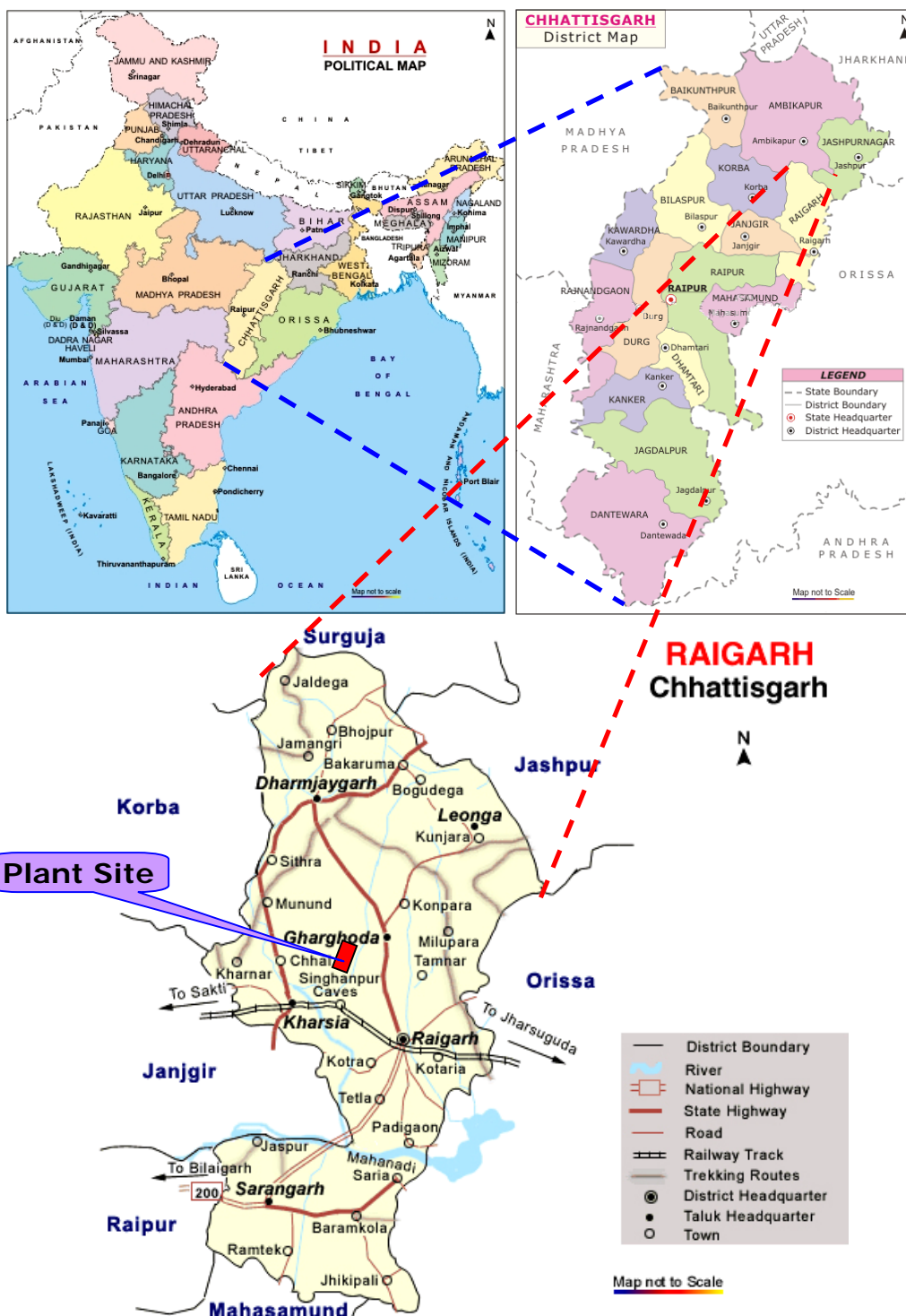
I hereby give an undertaking that the data and information given in the application and enclosures are true to the best of my knowledge and belief and I am aware that if any part of the data and information submitted is found to be false or misleading at any stage, the project be rejected and clearance given, if any, to the project will be revoked at our risk and cost.

Date: 24.11.14
Place: New Delhi

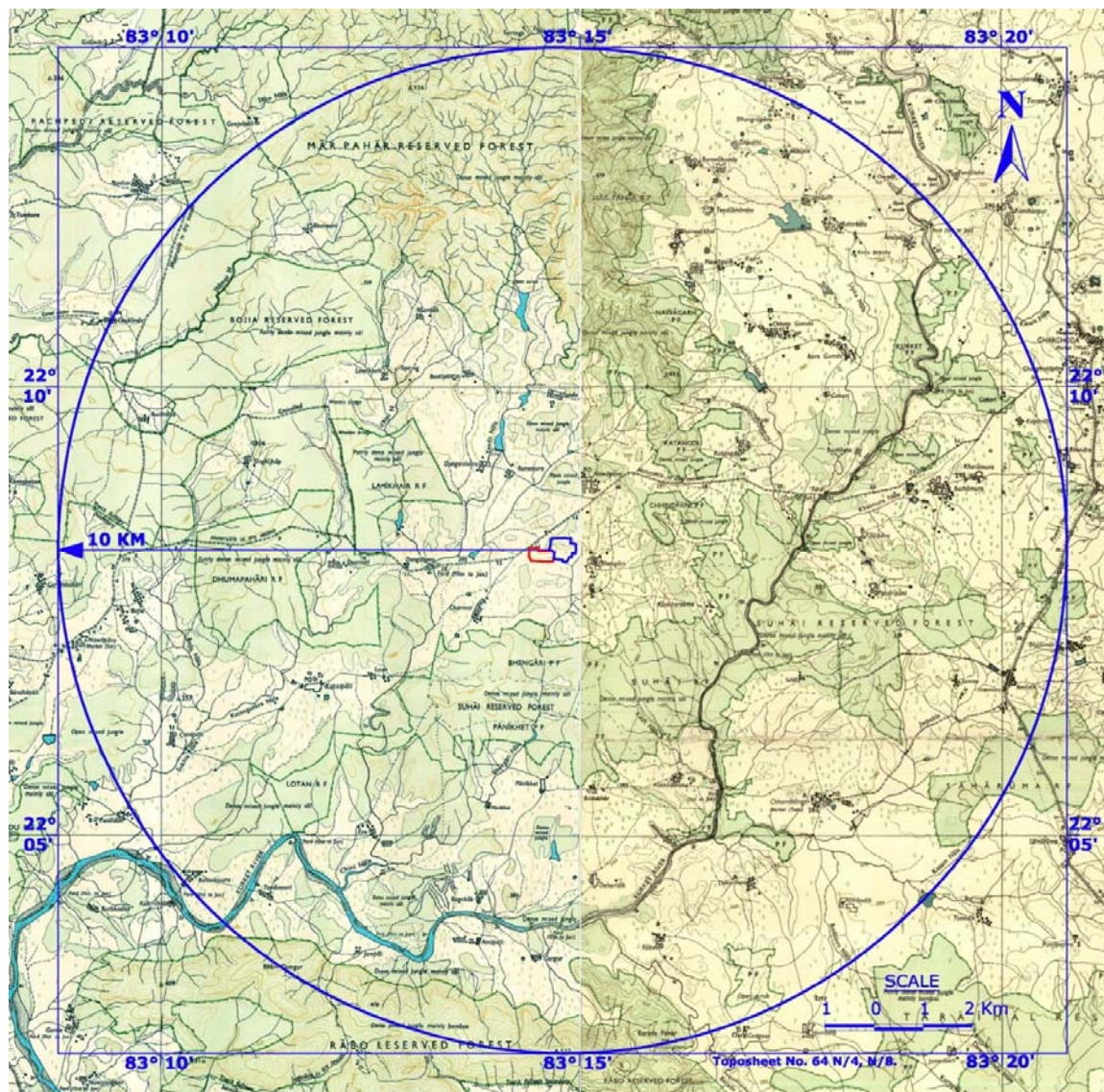
A handwritten signature in blue ink is written over a rectangular stamp. The stamp contains the text "For Mahavir Coal Washeries Private Limited" at the top and "Authorised Signatory" at the bottom.

Authorised Signatory

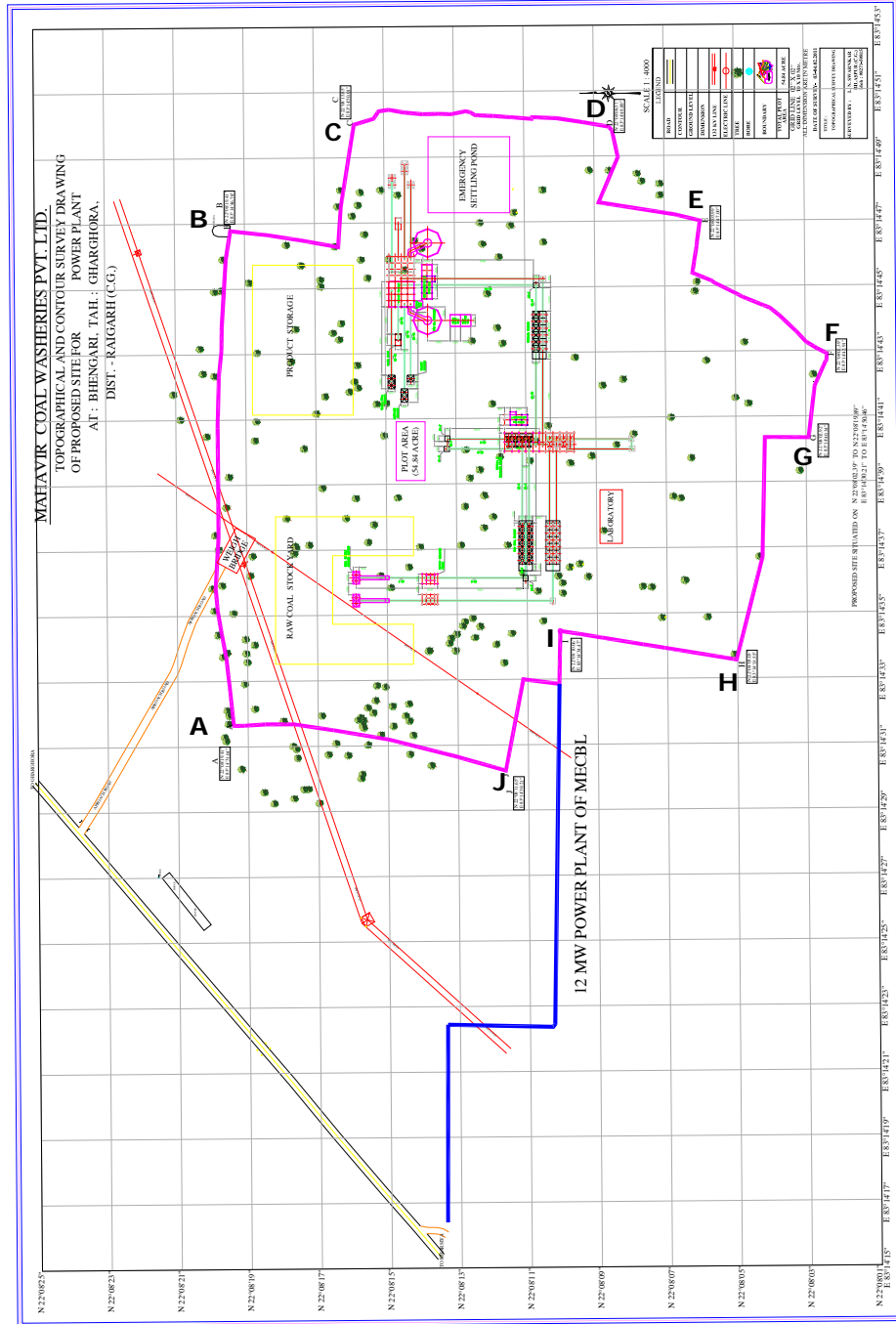
ANNEXURE-I INDEX MAP



ANNEXURE-II
STUDY AREA MAP COVERING 10-KM RADIUS



PLANT LAYOUT - ANNEXURE-III



Code	Latitude & Longitude		
A	22°08'19.41" N - 83°14'31.64" E	F	22°08'02.39" N - 83°14'42.91" E
B	22°08'19.41" N - 83°14'46.78" E	G	22°08'02.92" N - 83°14'40.34" E
C	22°08'15.85" N - 83°14'50.01" E	H	22°08'05.03" N - 83°14'33.55" E
D	22°08'08.57" N - 83°14'49.89" E	I	22°08'10.66" N - 83°14'34.47" E
E	22°08'05.99" N - 83°14'47.00" E	J	22°08'11.05" N - 83°14'30.21" E

ANNEXUER – IV **PROCESS DETAILS**

Brief Description of the Process

Pre-treatment section

Raw coal from mines will be transported to the washing plant by Rear Dump Trucks. Trucks will either dump coal into the ground hopper or on to the nearby ground dump from where the same will be fed in the ground hopper.

From the ground hopper the raw coal will be subjected to two stage close circuit crushing and screening and finally sized to minus 50 mm / 20 mm. The sized coal will be taken to a series of storage bunker

Washing Section

Sized raw coal, (-) 50 mm / 20 mm, from bunker will be transported to the washing plant building through covered belt conveyors where the same will be fed into coal wetting launder where water will be added with coal. Coal water slurry then will flow through launder to a set of Desliming Sieve Bend and Screen to remove (-) 1 mm coal fines from the slurry. Coal slurry collected from Desliming Sieve Bend and Screen under pan will gravitate through pipes to a Fine Coal Sump.

Deslimed coal [coarser fraction of (+) 1 mm] will go from screen discharge chute to the launder. Magnetite media of required specific gravity will be added at the back of the launder to get mixed with the coal and simultaneously to push the mixture of magnetite & coal slurry into the central column provided in the centre of the Primary HM Cyclone tank.

Coal & magnetite mixture from the centre column will be pumped by Primary Cyclone Feed Pump to feed to Primary Heavy Media Cyclones. Cyclones are lined with high alumina ceramic tiles. Cyclone will have overflow and underflow. Clean coal along with magnetite media will be received as over flow from the cyclone and be fed to a set of Clean Coal Sieve Bend and Clean Coal Draining & Rinsing Screen.

Magnetite media will be drained through Sieve Bend and first part of the Screen and be collected in the screen's dense catch pan. The same will be re-circulated back to the primary washing system.

The carried away magnetite with the coal particles will be removed by water spraying in the discharge part of the screen. Magnetite removed from coal by water spraying will be collected in the dilute catch pan of screen as dilute media, and be taken to dilute media tank

Underflow of primary cyclone treated as primary discard will be fed to a set of double sieve bend. Magnetite media drained through sieve bend will be re-circulated back to the primary system.

Primary discard collected from discharge end of double sieve bend will be fed to the central column of secondary heavy media tank along with magnetite media of required specific gravity.

Coal and magnetite mixture from the central column will be pumped by secondary cyclones feed pump to feed secondary heavy media cyclones. Middling along with magnetite media will be received as overflow from the cyclone and will be fed to a set of sieve bend and draining & rinsing screen. Underflows of cyclone along with magnetite are also fed to a sieve bend & screen. Magnetite media will be drained through sieve bend and first part of the screen and be collected in the screen's dense catch pan. The same will be re-circulated back to the secondary system.

Carried away magnetite with the coal particles will be removed by water spraying and be collected in the dilute catch pan of the screen and the same will be taken to dilute media tank.

Clean coal collected from discharge end of clean coal screen will be dried in centrifuge and transported to clean coal storage shed through belt conveyor / or directly to clean coal storage bunker.

Middling collected from overflow of the screen will be dried in a centrifuge. Dried middling along with dewatered fine coal will either be transported directly to FBC Power Plant through belt conveyor or to middling storage bunker.

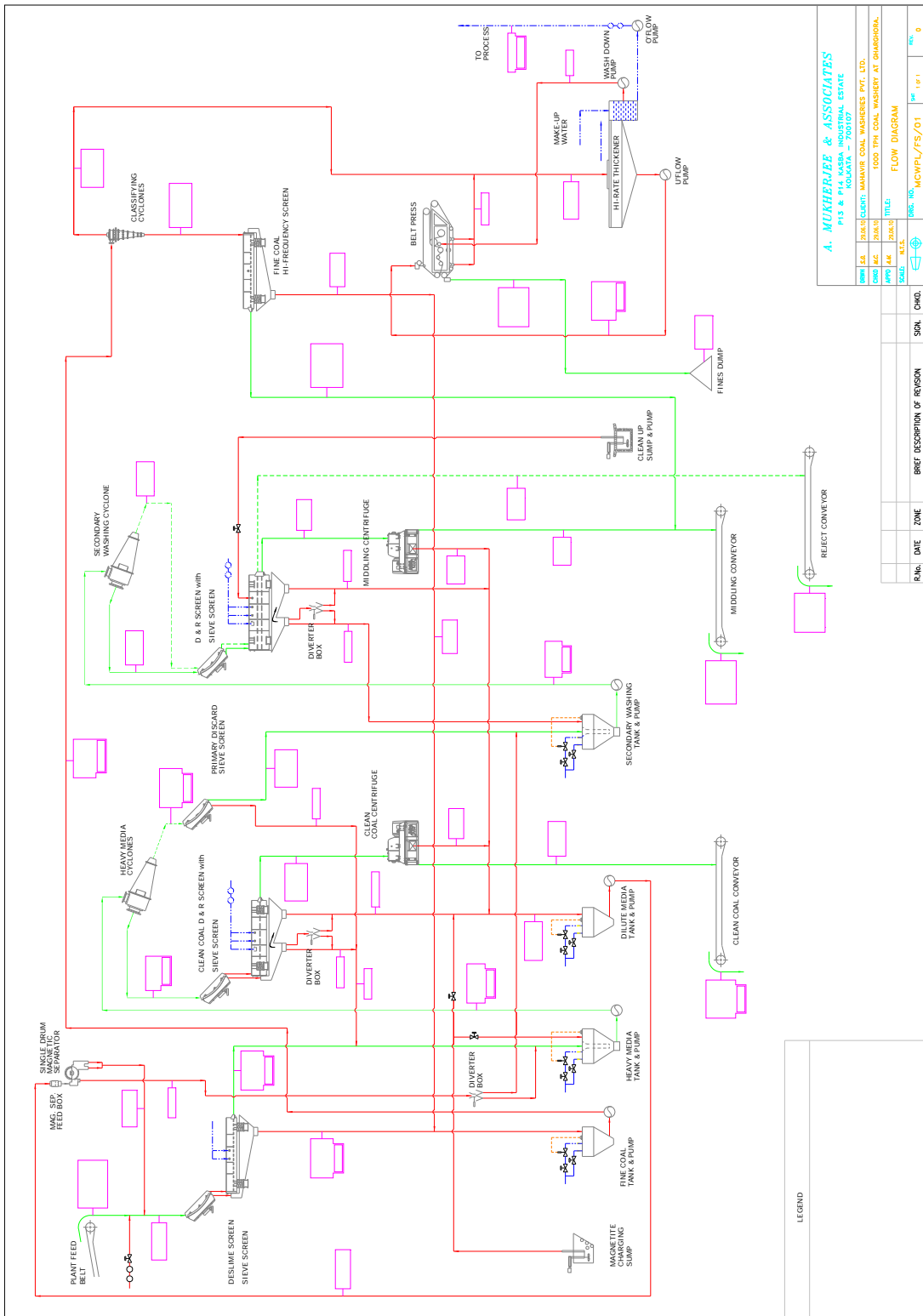
Reject collected will be transported to a reject bunker and from there to reject disposal area.

Fine coal slurry collected in the fine coal tank will be pumped into a set of classifying cyclone. The underflow of classifying cyclone will be dewatered in Hi Frequency screen while the overflow from cyclone will be fed to a Hi-rate Thickener. Thickened slurry from thickener will be dewatered in a Multi Roll Belt Press filter. Anionic and Cationic Flocculants will be used in thickener and Belt Press to facilitate settling and dewatering process. The discharge from Hi Frequency screen and belt press will be mixed with middling for dispatch to the end users.

Process Flow diagram for Coal Washery is shown in **Annexure – V**.

ANNEXUER – V

PROCESS FLOW DIAGRAM



ANNEXURE-VI

No. J-11015/117/2011-IA.II(M)
Government of India
Ministry of Environment & Forests

Paryavaran Bhawan,
CGO Complex,
New Delhi-110510.

To

Dated: 9th February 2012

Shri K.Narasimhan,
Dy. General Manager,
M/s Mahavir Coal Washeries Pvt. Ltd.,
198, Vasant Enclave,
Rao Tula Ram Marg, New Delhi-110057.

Sub: Proposed Coal Washery (5 MTPA) of M/s Mahavir Coal Washeries Pvt. Ltd., located at village Bhengari, Dist. Raigarh, Chhattisgarh - Terms of Reference (TÖR) – reg.

Sir,

This is with reference to letter no. MCWPL/DEL/KN/May/11-12/01 dated 19.05.2011 and subsequent letter dated 18.06.2011 with reference to the aforesaid project which was considered in the EAC (T&C) meeting held on 29th -30th August 2011 and on 28th -29th November 2011.

It was informed that Mahavir Coal Washeries Pvt. Ltd (MCWPL) is a subsidiary of Mahavir Group. The main business of the group has been Coal Trading. The Group entered in power sector in April 2006, by commissioning a 2.5 MW wind turbine generator at Dhule, Maharashtra. In November 2009, a 12MW power plant based on biomass was commissioned at Bhengari village in Chhattisgarh. The project has also been registered as CDM project on 13th October, 2010. An additional 12MW biomass based power plant has been granted EC by MOEF on 5th May, 2011. The main business of the Group has been coal trading. The present proposal is for establishing a new coal washery (commercial) of 5 MTPA capacity in a land area of 22.20 ha, which is mostly agricultural land. No forestland is involved. There are no ecologically sensitive areas found within 10km of the buffer zone. River Kurket flows at a distance of 3.6 km in the south-eastern side. There are 14 Forest blocks which include Protected Forest (5 PF), Reserve forest (9 RF) and Open Mixed forest block found within 10 km radius from the project boundary. The nearest village is about 7km from the washery.

It was stated that the 5 MTPA of raw coal (of ash content of 45-50%) would yield 2.2 MTPA of clean coal (of ash content of 34 %), middling of 2.35 MTPA (of ash content of 58%) and 0.45 MTPA of coal rejects (of ash content of 86.5 %), which would be sent to miscellaneous industrial users. The washery would be two-product washery operated on a wet process using Heavy Media Cyclone (wet process comprising crushing, screening, washing and handling). The washery design has inbuilt flexibility to produce washed coal of quality <34% ash content suitable for the power generation, sponge iron and cement plants. The washery would be operated on zero-discharge. The users of coal rejects in an FBC based TPP are being identified. Of the total 22.2 ha area, 4.97769 ha is for washery plant, 2.26626 ha is stockyard for raw coal, 1.01173 ha is for clean coal, middling and rejects, 3.84455 ha is for others (internal road, maintenance shed, office, stores, etc), 7.32489 ha is for green belt, 2.76808 ha as vacant land. It was clarified that no construction has been started on the site.

It was informed that sources of raw coal would be Chhal and Baroud OCP of M/s SECL, which are located at a distance of 14km and about 15km respectively. The proposed mode of coal transportation of raw coal would be by a proposed railway line of TRN Energy from its site to SECL proposed line from Baroud and Chhal OCPs to Robertston's Siding. A rail link of the proponent from Coal washery upto TRN Energy Line is proposed. Until such time the railway line is constructed and made operational, coal transportation would be by road for Baroud: Gharghora-Chhal-Robertson/Bilaspur and for Chhal:

Robertson/Bilaspur-Ambikapur. Robertson Siding is about 17km from the proposed site of the washery and it was stated that it is uneconomical to establish a rail link to Robertson Siding.

It was informed that the site considered for washery at Bhengari is located close to and about 700 m) to the existing coal transportation road through which SECL is already transporting the coal from Chhal and Baroud mines. The proponent further stated that the State revenue Department has surveyed the proposed project site. The site does not involve any R&R issue. Infrastructure facilities /logistic support available as the proposed washery site is adjacent to the existing 12MW Bio-mass based Power Plant of MECBL, a sister concern. Other suitable sites close to the mine, free from R&R issues, reasonably away from the forests and habitation, less vegetated and uncultivated are not available.

The proponent submitted that since the washery merely intercepts the existing route of transport of raw coal by road, no additional impacts is envisaged. The clean coal, middling and coal rejects would also be dispatched by the same route to the end users until the railway line is established. The proponent assured that a private dedicated railway siding would be setup for the proposed washery once location of railway siding for the above project from SECL rail net work is finalised and also assured that the transportation of washed coal, middlings, rejects would be by rail. The proponent requested the Committee to allow transportation of coal by road to 2x300MW TPP, which is being located near to the coal washery site at Bhengari, till such time rail link established. It was informed that the company is in process of taking consent of SECL to link their railway siding which will be coming up in 4-5 years.

The Committee desired that at the time of Environment Clearance, then proponent should produce documents for SECL railway siding through which coal is planned to be transported.

Based on the presentation made and discussions held, the Committee prescribed the following TOR:

- (i) A brief description of the plant, the technology used, the source of coal, the mode of transport of incoming unwashed coal and the outgoing washed coal. Specific pollution control and mitigative measures for the entire process.
- (ii) The EIA-EMP report should cover the impacts and management plan for the project of the capacity for EC is sought and the impacts of specific activities on the environment of the region, and the environmental quality – air, water, land, biotic community, etc. through collection of data and information, generation of data on impacts for the rated capacity. If the washery is captive to a coal mine/TPP/Plant the cumulative impacts on the environment and usage of water should be brought out along with the EMP.
- (iii) A Study area map of the core zone and 10km area of the buffer showing major industries/mines and other polluting sources, which shall also indicate the migratory corridors of fauna, if any and the areas where endangered fauna and plants of medicinal and economic importance are found in the area. If there are any ecologically sensitive areas found within the 15km buffer zone, the shortest distance from the National Park/WL Sanctuary Tiger Reserve, etc should be shown and the comments of the Chief Wildlife Warden of the State Government should be furnished.
- (iv) Collection of one-season (non-monsoon) primary base-line data on environmental quality – air (PM_{10} , $PM_{2.5}$, SO_x and NO_x), noise, water (surface and groundwater), soil.
- (iv) Detailed water balance should be provided. The break up of water requirement as per different activities in the mining operations vis-à-vis washery should be given separately. Source of water for use in mine, sanction of the competent authority in the State Govt., and examine if the unit can be zero discharge including recycling and reuse of the wastewater for other uses such as green belt, etc.
- (vi) Impact of choice of the selected use of technology and impact on air quality and waste generation (emissions and effluents).
- (vii) Impacts of mineral transportation along with distance in km - the entire sequence of mineral production, transportation, handling, transfer and storage of mineral and waste, , and their impacts on air quality should be shown in a flow chart with the specific points where fugitive emissions can arise and the specific pollution control/mitigative measures proposed to be put in place.
- (viii) Details of various facilities to be provided for the personnel involved in mineral transportation in terms of parking, rest areas, canteen, and effluents/pollution load from these activities. Examine

- whether existing roads are adequate to take care of the additional load of mineral [and rejects] transportation, their impacts. Details of workshop, if any, and treatment of workshop effluents.
- (ix) Impacts of CHP, if any on air and water quality. A flow chart of water use and whether the unit can be made a zero-discharge unit.
 - (x) Details of green belt development.
 - (xi) Including cost of EMP (capital and recurring) in the project cost.
 - (xiv) Public Hearing details of the coal washery to include details of notices issued in the newspaper, proceedings/minutes of public hearing, the points raised by the general public and commitments made in a tabular form. If the Public Hearing is in the regional language, an authenticated English Translation of the same should be provided.
 - (xv) Status of any litigations/ court cases filed/pending on the project.
 - (xvi) Submission of sample test analysis of:
 - I Characteristics of coal to be washed- this includes grade of coal and other characteristics – ash, S and heavy metals including levels of Hg, As, Pb, Cr etc.
 - II Characteristics and quantum of washed coal.
 - III Characteristics and quantum of coal waste rejects.
 - (xvii) Management/disposal/Use of coal waste rejects
 - (xviii) Copies of MOU/Agreement with linkages (for stand alone washery) for the capacity for which EC has been sought.
 - (xix) Submission of sample test analysis of:
 - Characteristics of coal to be washed- this includes grade of coal and other characteristics – ash, S
 - (xx) Corporate Environment Responsibility:
 - a) The Company must have a well laid down Environment Policy approved by the Board of Directors.
 - b) The Environment Policy must prescribe for standard operating process/procedures to bring into focus any infringements/deviation/violation of the environmental or forest norms/conditions.
 - c) The hierarchical system or Administrative Order of the company to deal with environmental issues and for ensuring compliance with the environmental clearance conditions must be furnished.
 - d) To have proper checks and balances, the company should have a well laid down system of reporting of non-compliances/violations of environmental norms to the Board of Directors of the company and/or shareholders or stakeholders at large.

The following general points should be noted:

- (i) All documents should be properly indexed, page numbered.
- (ii) Period/date of data collection should be clearly indicated.
- (iii) Authenticated English translation of all material provided in Regional languages.
- (iv) After the preparation of the draft EIA-EMP Report as per the aforesaid TOR, the proponent shall get the Public Hearing conducted as prescribed in the EIA Notification 2006 and take necessary action for obtaining environmental clearance under the provisions of the EIA Notification 2006.
- (v) The letter/application for EC should quote the MOEF file No. and also attach a copy of the letter prescribing the TOR.
- (vi) The copy of the letter received from the Ministry on the TOR prescribed for the project should be attached as an annexure to the final EIA-EMP Report.
- (vii) The final EIA-EMP report submitted to the Ministry must incorporate the issues in TOR and that raised in Public Hearing. The index of the final EIA-EMP report, must indicate the specific chapter and page no. of the EIA-EMP Report where the specific TOR prescribed by Ministry and the issue raised in the P.H. have been incorporated. Mining Questionnaire (posted on MOEF website) with all sections duly filled in shall also be submitted at the time of applying for EC.
- (viii) General Instructions for the preparation and presentation before the EAC of TOR/EC projects of Coal Sector should be incorporated/followed.
- (viii) The aforesaid TOR has a validity of two years only.

The following additional points are also to be noted:

- (i) Grant of TOR does not necessarily mean grant of EC.
- (ii) Grant of TOR/EC to the present project does not necessarily mean grant of TOR/EC to the captive/linked project.
- (iii) Grant of TOR/EC to the present project does not necessarily mean grant of approvals in other regulations such as the Forest (Conservation) Act 1980 or the Wildlife (Protection) Act, 1972.
- (iv) Grant of EC is also subject to Circulars issued under the EIA Notification 2006, which are available on the MOEF website: www.envfor.nic.in

Yours faithfully,



(Dr.T.Chandini)
Director

Copy to: Member-Secretary, Chhattisgarh Environment Conservation Board, 1-Tilak Nagar, Shiv Mandir Chowk, Main Road, Avanti Vihar, RAIPUR-Chhattisgarh – 492001.

Modified TOR dated 27.04.2012

No. J-11015/117/2011-IA.II(M)
Government of India
Ministry of Environment & Forests

Paryavaran Bhawan,
CGO Complex,
New Delhi-110510.

Dated: 27th April 2012

To

Shri K.Narasimhan,
Dy. General Manager,
M/s Mahavir Coal Washeries Pvt. Ltd.,
198, Vasant Enclave, Rao Tula Ram Marg,
New Delhi-110057.

MODIFICATION OF TOR

Sub: Mahavir Coal Washery (5 MTPA) of M/s Mahavir Coal Washeries Pvt. Ltd., located at vill. Bhengari, Tehsil Gharghora, Dist. Raigarh, Chhattisgarh – Letter of PP dated 13.02.2012 on TOR granted on 09.02.2012)

Sir,

This is with reference to this Ministry's grant of TOR dated 09.02.2012 and your letter dated 13.02.2012 thereon, which was considered in the meeting of Expert Appraisal Committee (Thermal & Coal Mining) held on 19th-20th March 2012. The following three corrections have been sought in the TOR:

(i) nearest village is about 0.7 km instead of 7 km as given in the TOR letter, (ii) coal transportation should be permitted by road as allowed until such time rail link is established. It was clarified that coal transportation is not to 2x300 MW TPP and (iii) Page 2, 3rd para, the company is in the process of taking consent of TRN Energy (and not SECL as stated in the TOR) to link their railway siding, which will come up in 4-5 years. The proponent further informed that subsequent to the issuance of TOR, proposal for establishing three rail corridors in Chhattisgarh has been approved in the Railway Budget presented to the Parliament. The three corridors includes a line linking SECL mines (from where the raw coal would be obtained) to Gharghora, which would also be examined in the light of the transportation of coal to and from the Washery.

The Committee had desired that coal transport from mine to the washery should be by closed conveyor and not by road.

In view of the above clarification, the following corrections are introduced in the Preamble paras of the TOR dated 13.02.2012:

- (i) page 1, 2nd para, last line: 7 is replaced by 0.7
- (ii) page 2, 3rd para, 7th line: the words 'to 2x300 MW TPP' stand deleted.
- (iii) page 2, 3rd para, last line: the word 'SECL' is replaced with 'TRN Energy'.

All conditions in the TOR dated 09.02.2012 remain the same. The proponent shall, in addition to the conditions stipulated in the TOR dated 09.02.2012 shall examine coal transport from mine to the washery by closed conveyor and not by road. The transport of raw coal and clean coal by rail to and from the washery shall also be examined in the context of the three rail corridors proposed, which includes a line linking SECL mines (from where the raw coal would be obtained) to Gharghora.

Yours faithfully,

(Dr.T.Chandini)
Director

Copy to: Member-Secretary, Chhattisgarh Environment Conservation Board, 1-Tilak Nagar, Shiv Mandir Chowk, Main Road, Avanti Vihar, RAIPUR-Chhattisgarh – 492001.

Modified TOR dated 16.12.2013

File No. J-11015/117/2011-IA.II(M)
GOVERNMENT OF INDIA
MINISTRY OF ENVIRONMENT AND FORESTS
IA-II (Coal-Mining) Division

Paryavaran Bhawan
CGO Complex, Lodhi Road
New Delhi- 110 510

Dated: 16 December, 2013

To,
The Deputy General Manager
M/s Mahavir Coal Washeries Pvt. Ltd.,
198, Vasant Enclave,
Rao Tularam Marg,
New Delhi – 110057

MODIFICATION OF TOR

**Subject: Mahavir Coal Washery (5 MTPA) M/s Mahavir Coal Washeries Pvt. Ltd., (MCWPL)
District Raigarh, Chhattisgarh - Modification in TOR condition.**

Sir,

This is with reference to your letter no. MCWPL/DEL/YP/12-13/08 dated 17th July, 2012, MCWPL/DEL/YP/12-13/09 dated 14th August, 2012 and MEWPL/DEL/YP/13-14/03 dated 6th May, 2013 with regard to modification of TOR granted vide letter no J-11015/117/2011-IA.II(M) dated 09.02.2012 and modification of TOR dated 27.04.2012.

2. The proposal was last considered in the 73rd EAC meeting held during 6-7th May, 2013 for modification of TOR which recommended for the modification of the TOR for replacement of para 2 of Modified TOR letter no J-11015/117/2011-IA.II(M) dated 27.04.2012 which states "coal transport from mine to the washery should be by closed conveyor and not by road" would now be replaced with the following:

- (i) The coal should be transported in mechanically covered trucks over a period not more than of 5 years or till the railway siding comes up whichever is earlier;
- (ii) MoU with the end users shall be submitted to the MoEF at the time of the consideration for the EC.



Mavir_ToR_Modification

1


4. Based on the recommendations of the Expert Appraisal Committee (EAC), the Ministry of Environment and Forests herewith modifies the TOR as mentioned below:

"Para 2 of the TOR, vide letter no. J-11015/117/2011-IA.II(M) dated 09.02.2012, shall be read as follows;

- (i) The coal should be transported in a mechanically covered trucks over a period not more than of 5 years or till the railway siding comes up whichever is earlier;
- (ii) MoU with the end users shall be submitted to the MoEF at the time of the consideration for the EC."

5. All other conditions in the letter no J-11015/117/2011-IA.II(M) dated 09.02.2012 and 27.04.2012 remain unchanged.

Yours faithfully,


(Manoranjan Hota)
Director

Copy to: The Chairperson, Chhattisgarh Environment Conservation Board, 14/3 Park Street, Choubey Colony, Raipur.



छत्तीसगढ़ पर्यावरण संरक्षण मंडल

व्यवसायिक परिसर, छत्तीसगढ़ हाऊसिंग बोर्ड कॉलोनी,

कबीर नगर, रायपुर (छ.ग.) 492099

क्रमांक 487/मु./तक./छ.ग.प.सं.मं./2014
प्रति,

रायपुर, दिनांक 22/2/2014

मेसर्स महावीर कोल वॉशरी प्राईवेट लिमिटेड,
महावीर इन्सपायर हाउस, बिहाईन्ड दीन दयाल गार्डन,
व्यापार विहार, बिलासपुर- 496001
जिला- बिलासपुर (छ.ग.)

विषय :- उद्योग द्वारा ग्राम- भेंगारी, तहसील - घरघोड़ा, जिला-रायगढ़ के कोल वॉशरी
क्षमता- 5 मिलियन टन/वर्ष के पर्यावरणीय स्वीकृति हेतु लोक सुनवाई बाबत।

संदर्भ :- आपका आवेदन पत्र क्रमांक एमसीडब्ल्यूपीएल/बीएसपी/14/36, दिनांक
04/02/2014.

उपरोक्त विषयांतर्गत उद्योग के ग्राम-भेंगारी, तहसील - घरघोड़ा, जिला-रायगढ़ के कोल वॉशरी क्षमता- 5 मिलियन टन/वर्ष के पर्यावरणीय स्वीकृति हेतु लोक सुनवाई के संबंध में आपके द्वारा पत्र दिनांक 04/02/2014 के माध्यम से लोक सुनवाई दस्तावेज ड्राफ्ट ई.आई.ए. रिपोर्ट, कार्यपालकसार (हिन्दी एवं अंग्रेजी) 10-10 प्रतियों में आवेदन प्रेषित किया गया है। प्रेषित ड्राफ्ट ई.आई.ए. रिपोर्ट केवल अंग्रेजी में प्रेषित की गई है। अतः प्रेषित ड्राफ्ट ई.आई.ए. रिपोर्ट को अंग्रेजी एवं हिन्दी में 10 दिवस के भीतर प्रेषित करें, ताकि आवेदन पर आगामी कार्यवाही सुनिश्चित की जा सके। उपरोक्त जानकारी के अभाव में आपका आवेदन बोर्ड स्तर पर लंबित नहीं माना जावेगा।

कार्यपालन अभियंता

छत्तीसगढ़ पर्यावरण संरक्षण मंडल,
रायपुर (छ.ग.)

रायपुर, दिनांक / /2014.

पृ.क्रमांक /मु./तक./छ.ग.प.सं.मं./2014
प्रतिलिपि:-

क्षेत्रीय अधिकारी, क्षेत्रीय कार्यालय, छ.ग. पर्यावरण संरक्षण मंडल, रायगढ़ (छ.ग.)
की ओर सूचनार्थ एवं आवश्यक कार्यवाही हेतु प्रेषित।

कार्यपालन अभियंता

छत्तीसगढ़ पर्यावरण संरक्षण मंडल,
रायपुर (छ.ग.)

Subject to Bilaspur Jurisdiction

**MAHAVIR COAL WASHERIES PRIVATE LIMITED**

"MAHAVIR INSPIRE HOUSE", Behind Deen Dayal Garden, Vyapar Vihar, Bilaspur (C.G.) 495001

Phone : 07752-213317, 213319 E-mail : mcwpl.bsp@gmail.com

Works : Village-Bhelai, Tehsil-Janjgir, Distt.-Janjgir-Champa (C.G.)

Ref. : MCWPL/BSP/14/ 69

Date: 05/03/2014

The Member Secretary,
Chhattisgarh Environment Conservation Board,
Commercial Complex, C.G. Housing Board Colony,
Kabir Nagar, Raipur
Distt. Raipur (CG)

Kind attn. : Shri A.K. Gedam (Executive Engineer)

Sub. : Public Hearing for Environment Clearance of our 5 MTA Coal Washery at Village - Bhengari, Post-Navapara, Tenda, Tehsil-Gharghora, Distt.- Raigarh (C.G.) of M/s Mahavir Coal Washeries Pvt. Ltd.- reg. submission of 10 copies of Draft EIA Report in Hindi (also).

Ref. : Your letter no. 5487/मु./तक./छ.ग.प.सं.म./2014 दिनांक 22.02.2014.

Dear Sir,

With reference to the above mentioned letter we have been asked to submit 10 copies of the draft EIA report in Hindi (also). On enquiry from our consultants and their experts we wish to submit as under.

- 1) The EIA report is a pure technical document prepared as per provisions and guidelines of the EIA notification 2006 of MoEF. The report consists of such technical field data collected from environmental measuring instruments expressed in English units only. The terminology and units are again as per CPCB norms having no Hindi terminological equivalence.
- 2) Further, the software modeling and other mathematical tools are all in English and linked with international standards.
- 3) Even the botanical names of flora and fauna are available in (Latin) English only.
- 4) Further more as per provisions and guidelines of the EIA notification 2006 of MoEF, we have submitted 10 copies of each of Summary EIA Report in English and in local language i.e. Hindi which describes the Summary Project activities in Hindi also.

Under the circumstance, it is our considered opinion that EIA reports are being prepared in English only and translation in Hindi is not possible at present. You are, therefore, requested to arrange to conduct the Public hearing on the basis of the English draft EIA reports.

Thanking you,

Yours faithfully,

For, MAHAVIR COAL WASHERIES PVT. LTD.

(D.S. Rajput)
Vice President
09981502645



E:\AR Working Files\5 MTA Coal Washery\Public Hearing\Reply of CEO Raipur letter dtd. 22.02.2014.doc

Regd. Office : 198, Vasant Enclave, Rao Tularam Marg, New Delhi - 110 057
Phone : 011-26141901, 26141902 Fax : 011-26141906 E-mail : mahavirglobalcoal@yahoo.co.in

R
04/04/14

छत्तीसगढ़ पर्यावरण संरक्षण मंडल

व्यवसायिक परिसर, छत्तीसगढ़ हाऊसिंग बोर्ड कॉलोनी,

कबीर नगर, रायपुर (छ.ग.) 492099

क्रमांक 33 / मु. / तक. / छ.ग.प.सं.म. / 2014

रायपुर, दिनांक 01/4/2014

प्रति,

मेसर्स महावीर कोल वॉशरी प्राईवेट लिमिटेड,
महावीर इन्सपायर हाउस, बिहाईन्ड दीन दयाल गार्डन,
व्यापार विहार, बिलासपुर- 496001
जिला- बिलासपुर (छ.ग.)

विषय :- उद्योग द्वारा ग्राम- भेंगारी, तहसील - घरघोड़ा, जिला-रायगढ़ के कोल वॉशरी क्षमता- 5 मिलियन टन/वर्ष के पर्यावरणीय स्वीकृति हेतु लोक सुनवाई बाबत।

- संदर्भ :-
1. आपका आवेदन पत्र क्रमांक एमसीडब्ल्यूपीएल/बीएसपी/14/36, दिनांक 04/02/2014.
 2. मंडल का पत्र क्रमांक 5487 दिनांक 22/02/2014.
 3. आपका पत्र क्रमांक एमसीडब्ल्यूपीएल/बीएसपी/14/69, दिनांक 05/03/2014

-----:0:-----

उपरोक्त विषयांतर्गत संदर्भित पत्रों का अवलोकन करें। उद्योग के ग्राम-भेंगारी, तहसील - घरघोड़ा, जिला-रायगढ़ के कोल वॉशरी क्षमता- 5 मिलियन टन/वर्ष के पर्यावरणीय स्वीकृति हेतु लोक सुनवाई के संबंध में मंडल के पत्र दिनांक 22/02/2014 के परिपेक्ष्य में आपके द्वारा लोक सुनवाई दस्तावेज ड्राफ्ट ई.आई.ए. रिपोर्ट को हिन्दी में (हार्ड एवं साफ्ट कॉपी 10 प्रतियों में) प्रेषित नहीं किया गया है। अतः वांछित दस्तावेज 10 दिवस के भीतर प्रेषित करें, ताकि आवेदन पर आगामी कार्यवाही सुनिश्चित की जा सके। उपरोक्त जानकारी के अभाव में आपका आवेदन बोर्ड स्तर पर लंबित नहीं माना जावेगा।

SNR- PAP- 38
4/4

कार्यपालन अभियंता

छत्तीसगढ़ पर्यावरण संरक्षण मंडल,
रायपुर (छ.ग.)

रायपुर, दिनांक / / 2014.

पृ.क्रमांक
प्रतिलिपि:-

/ मु. / तक. / छ.ग.प.सं.म. / 2014

क्षेत्रीय अधिकारी, क्षेत्रीय कार्यालय, छ.ग. पर्यावरण संरक्षण मंडल, रायगढ़ (छ.ग.) की ओर सूचनार्थ एवं आवश्यक कार्यवाही हेतु प्रेषित।

कार्यपालन अभियंता

छत्तीसगढ़ पर्यावरण संरक्षण मंडल,
रायपुर (छ.ग.)