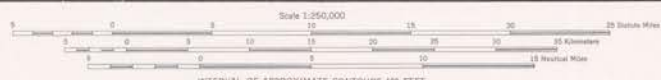


US52
Edition 1-AMS of the Original 7-56
Prepared by the Army Map Service (U.S. Corps of Engineers, U. S. Army, Washington, D. C. Completed in 1955 from One inch Series, L.S.A. 260, Survey of India, 1873-1945. Photometric detail derived by photo grammatical methods. Road information should be referred to with caution. Airphoto prints are correlated with the Indian Railway System. Vegetation information is generally qualitative. Boundaries for international rivers are omitted where information is not available or where density of detail does not permit correlation. The boundary between South Bombay and Secunderabad is shown only where information is available.



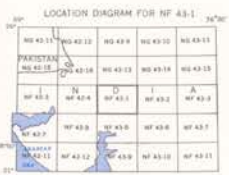
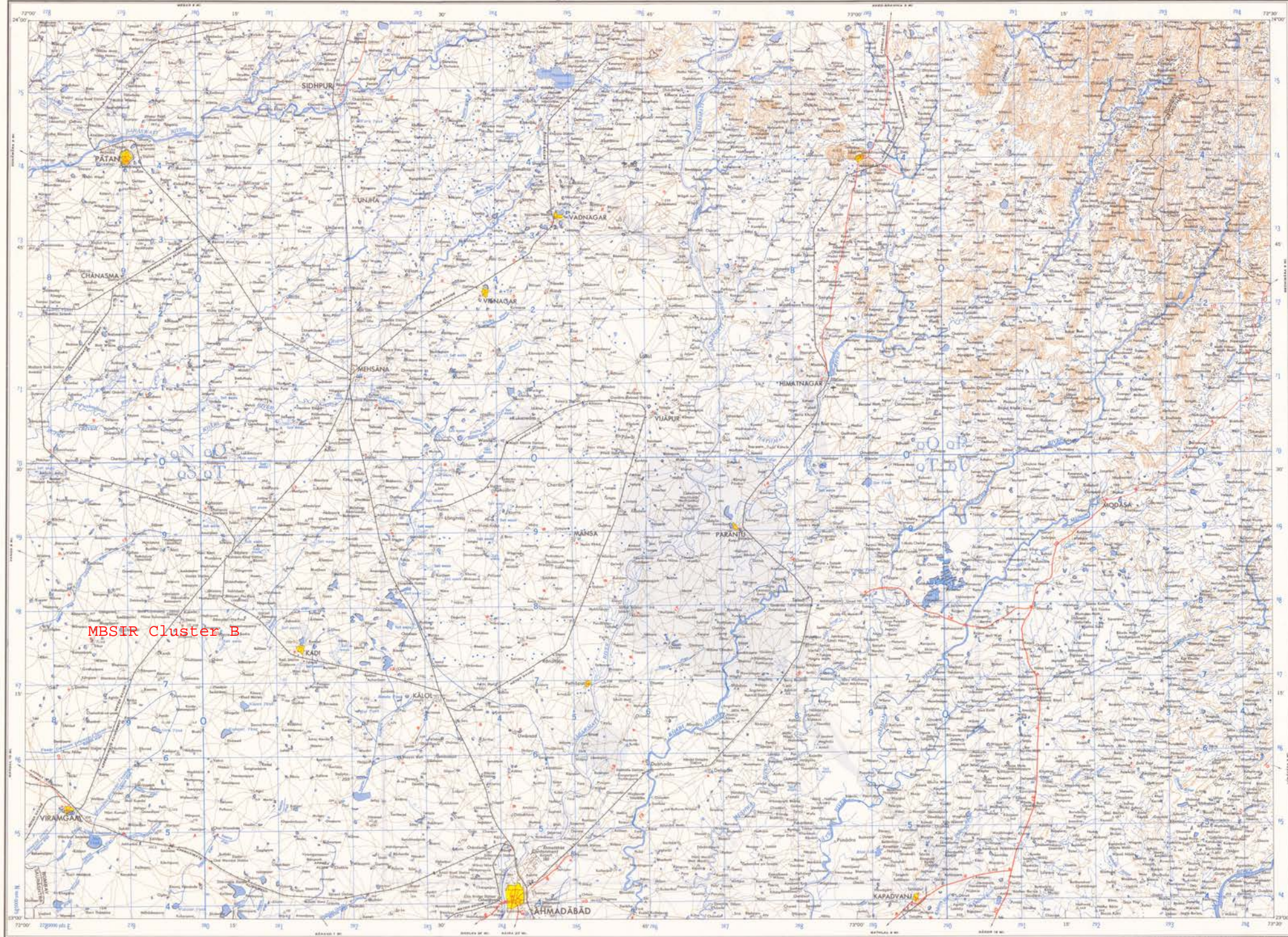
INTERVAL OF APPROXIMATE CONTOURS 100 FEET
TRANSVERSE MERCATOR PROJECTION
BLACK NUMBERED LINES INDICATE THE GRID SQUARE ZONE IN A GRID. EASTEST EXTENSION OF THE GRID FROM POINTS OF THE GRID NUMBER NOT INDICATED.

THE DELINEATION OF INTERNATIONAL BOUNDARIES ON THIS MAP MUST NOT BE CONSIDERED AUTHENTICATIVE

GLOSSARY

G
7650
S250
05
SHEET
87
82-8
PCL MAP

PRINTED BY ARMY MAP SERVICE, CORPS OF ENGINEERS, 7-56, 735889
1:1
To use a TRANSVERSE MERCATOR PROJECTION MAP, you must know the GRID SQUARE ZONE and the GRID NUMBER of the point you wish to locate. The GRID SQUARE ZONE is the lettered area in the upper left corner of the map. The GRID NUMBER is the number in the upper right corner of the map. The GRID SQUARE ZONE and the GRID NUMBER are shown on the map. The GRID SQUARE ZONE and the GRID NUMBER are shown on the map. The GRID SQUARE ZONE and the GRID NUMBER are shown on the map.



LEGEND

Figures in red denote approximate distance in miles between stars.
 Lane information is not available for roads in loose surface, all weather, temporary.
 On this map a lane is generally considered as being 9 to 10 feet (2.44 to 3.05 meters) in width.

POPULATED PLACES

Over 100,000	BOMBAY
25,000 to 100,000	QUETTA
10,000 to 25,000	MENSANA
5,000 to 10,000	Mensara
Less than 5,000	Mensara

RAILROADS

- Narrow gauge (3'6")
- Single track
- Multiple track
- Narrow gauge

ROADS

- All weather, hard surface, two or more lanes
- All weather, hard surface, one lane each
- All weather, loose or light surface
- Ear or dry weather, loose surface
- Chalk track
- Footpath, trail

BOUNDARIES

- International
- State
- Buildings or landmark feature
- Mine
- Horizontal barrier zone
- Good irrigation in base
- Landmark symbol
- Landing area
- Supplies airport
- Supplies exchange
- Unidentified stream
- Mouth or opening, Treated areas
- Marsh/lowland, Plantation

U502
Edition 1-AMS (First Printing, 4-59)

Prepared by the Army Map Service, Directorate of Engineers, U. S. Army, Washington, D. C. Compiled in 1954 from One Inch Series, 1:63,360, Survey of India, 1954, 1954, topographic maps, controlled ground survey, reliability pass. Road classification should be referred to with caution. Railways shown are attached with the Western Railway System. No navigation information is available. Names for unlocated areas are omitted where information is not available or where density of detail does not permit.

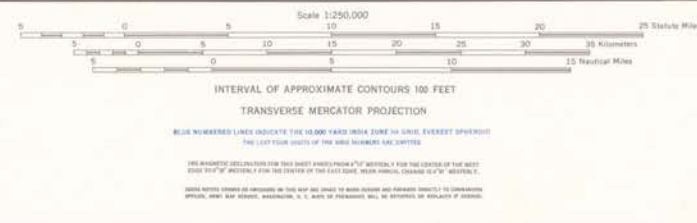
THE DELINEATION OF INTERNATIONAL BOUNDARIES ON THIS MAP MUST NOT BE CONSIDERED AUTHORITY.

STATE BOUNDARIES AND THE DELINEATION OF UNLOCATED AREAS MUST NOT BE CONSIDERED AUTHORITY AND ARE A CONVENTIONAL, NEAREST APPROXIMATION.

G.
7650
S250
05
SHEET
NF
43-1
PCL MAP

6580e
737

GLOSSARY



PRINTED BY ARMY MAP SERVICE, CORPS OF ENGINEERS, 4-59 - 379737

43	40	37
42	41	40
41	40	39

TO FIND A COORDINATE ON THIS MAP, FIND THE NUMBER OF THE SHEET IN WHICH THE POINT IS LOCATED. THE COORDINATE OF THE CENTER OF THE SHEET IS GIVEN IN THE MARGINS.

TO FIND A COORDINATE ON THIS MAP, FIND THE NUMBER OF THE SHEET IN WHICH THE POINT IS LOCATED. THE COORDINATE OF THE CENTER OF THE SHEET IS GIVEN IN THE MARGINS.