



**JP INFRA (MUMBAI) PVT. LTD.** : 4th Floor, Viraj Towers, Western Express Highway, Near WEH Metro Station, Andheri (East), Mumbai - 400 093.  
T: 022 42415678 / F: 022 42415679 | info@jpinfra.com | www.jpinfra.com (CIN U45200MH2006PTC160428)

**Date: 09.03.2017**

To,  
**The Director,**  
**Infrastructure and Miscellaneous Projects & CRZ**  
Indira Paryavaran Bhavan  
Jor Bagh Road,  
New Delhi - 110 003

**Sub:** Reply to EDS in respect of Environmental Clearance for Proposed Expansion of Residential cum Commercial Project on Plot bearing survey no 110/1(pt), 26/8(pt), 110/3, 26/9, 25/1, 24/3, 21/2A(pt), 21/2B(pt), 22/2, 22/5 (pt), 112/2 (pt), 112/3, 117/1, 117/3, 117/4, 113/2(pt), 117/5, 117/6, 116/1(pt), 118/2, 118/3, 116/2A(pt), 116/3(pt), 116/4, 116/6, 116/5, 116/7, 128/4, 116/9, 116/8, 127/2, 127/4, 127/5, 133/3, 133/2, 133/5, 133/4, 133/6, 133/8, 133/7, 148/2, 148/1, 133/1, 134/3, 135/3, 134/8, 134/2, 134/1, 127/3, 127/1, 126/2, 126/5, 134/4, 134/5, 126/3, 126/1, 126/4, 118/8, 118/5, 118/7, 118/4, 124/3, 125/1, 125/2, 125/3, 125/4, 124/5, 125/5, 125/6, 125/7 at Village: Ghodbunder, Dist. Thane, Maharashtra. **[F. No. 21-3/2017-IA-III]**

**Ref:** 1. Minutes of 14<sup>th</sup> EAC (Infra-II) meeting held on 14.02.2017 (Item no.14.3.18) (F. No. 21-3/2017-IA-III)

2. Email from MoEF & CC dated 06.03.2017 regarding additional details Sought

Respected Sir,

We are very much thankful to Expert Appraisal Committee (Infra-2) for appraising our above referred project in its 14<sup>th</sup> Meeting held on 14.02.2017 (Item no. 14.3.18)

As per the minutes of the meeting, we were asked to comply with certain points raised by committee.

The point wise reply to the queries raised is enclosed herewith. We hope that reply is in line with your requirement.

Thanking you,  
Yours faithfully,

**FOR J. P. INFRA (MUMBAI) PVT. LTD.**

**Authorized Signatory**

**Enclosures:**


1. As above

**POINTWISE COMPLIANCE TO QUERIES RAISED DURING  
14<sup>th</sup> EAC (Infra-II) MEETING**

**Point No. 1:** Certified compliance report issued by the Regional Office on the environmental conditions stipulated in the earlier EC issued by the MoEF CC.

**Compliance:** We have applied for certification of compliance report to MoEF Regional Office, Nagpur on 07.02.2017. We are awaiting the site visit by RO, Nagpur and certification. We assure that, we will submit the certificate to MoEF on receiving it. Copy of letter submitted for certification is attached as **figure no. 1**

**Figure No. 1: Application to RO, Nagpur for Certified compliance report**



**JP INFRA**

**JP INFRA (MUMBAI) PVT. LTD.** : 4th Floor, Viraj Towers, Western Express Highway, Near WEH Metro Station, Andheri (East), Mumbai - 400 093.  
T: 022 42415678 / F: 022 42415679 | info@jpinfra.com | www.jpinfra.com (CIN U45200MH2006PTC160428)

---

**30<sup>th</sup> January 2017**

To,  
**The Director,**  
**Regional Office (West Central Zone),**  
**Ministry of Environment, Forest and Climate Change,**  
Ground Floor, East wing,  
New Secretariat Building,  
Civil lane, Nagpur-440001

**Subject:** Certified report of status of compliance of conditions stipulated in the Environment Clearance

**Project:** Residential Project at Plot bearing CTS no. 24/1 (pt), 2, Village: Ghodbunder, Dist. Thane, Maharashtra.

**EC No:** F. No. 21-149/2014-IA.III dt. 18<sup>th</sup> June, 2015

**Reference:** MoEF OM dated 30<sup>th</sup> May, 2012, F.No.J-11011/618/2010-IA.II (I)


Dear Sir,

We have obtained the Prior Environmental Clearance from the MoEF & CC vide F. No. 21-149/2014-IA.III dt. 18<sup>th</sup> June, 2015. The periodic compliance to the conditions stipulated in the EC was communicated to the MoEF&CC regional office, Environment Department and MPCB.

We are now amending our EC and applied for the same to the MoEF&CC, however as per the Circular dated 30<sup>th</sup> May, 2012, F.No.J-11011/618/2010-IA.II (I) a compliance needs to be certified by the MoEF&CC regional office. We therefore, request your good-office to kindly communicate the compliance of our project with respect to the conditions stipulated in the EC to the MoEF&CC. If you wish to visit the site to ascertain the compliance please let us know, we shall arrange the same.


Your early action in this regard will be highly appreciated.

Thanking you,  
Yours faithfully,  
**FOR SKYLARK REALTORS PVT. LTD.**



Authorized signatory

Enclosure: MoEF Circular dated 30<sup>th</sup> May, 2012, F.No.J-11011/618/2010-IA.II (I)

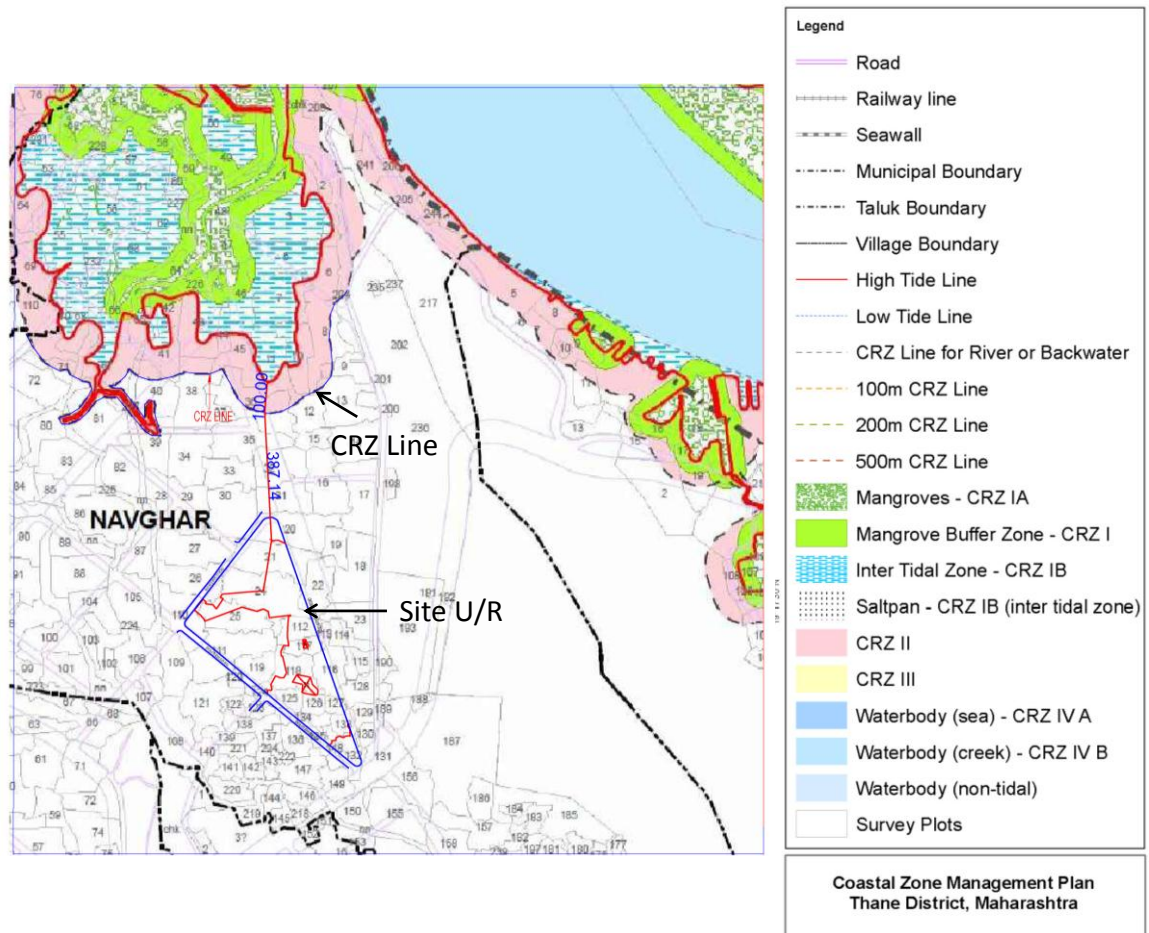


SP AFM RA7AR <400610>  
E1M6778014R5TN  
Printer No:1,IP-Code:0025  
To:THE DIRECTOR, REGION,  
NAGPUR, PIN:440001  
From:JP INFRA, MUMBAI  
Wt:20grams,  
Awt:40.00 ,07/02/2017 ,11:21  
Tax:Rs.5.00<Track on www.indiapost.gov.in>

**Point No. 2:** Whether project attracts the provision of CRZ notification, 2011

**Compliance:** This project does not attract CRZ notification as per CZMP and DP of Mira Bhayander Municipal Corporation (MBMC).  
The CZMP and DP are attached as **figure no. 2 & 3 resp.**

**Figure No. 2: CZMP MAP**





## CZMP MAP OF THANE DISTRICT

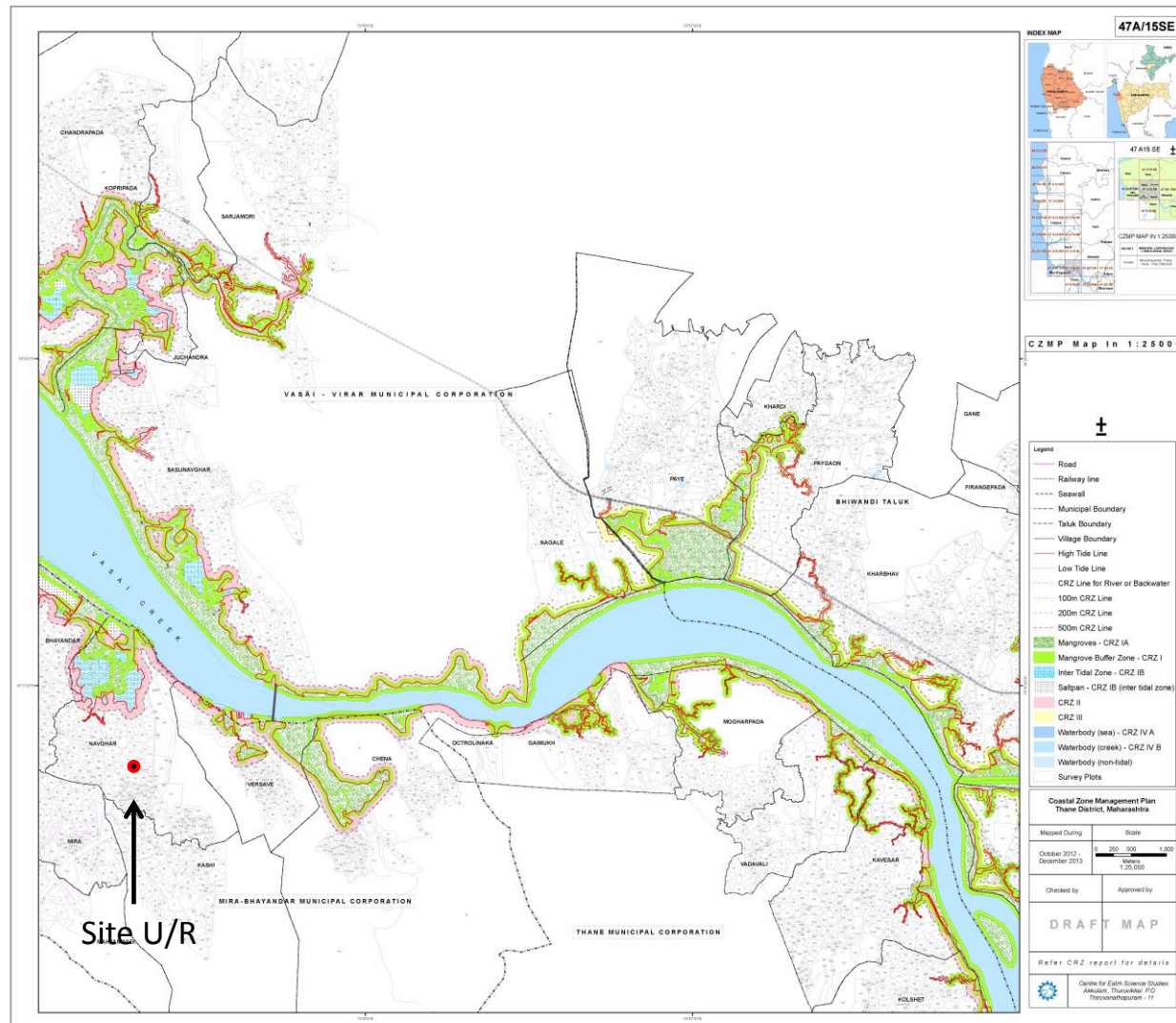
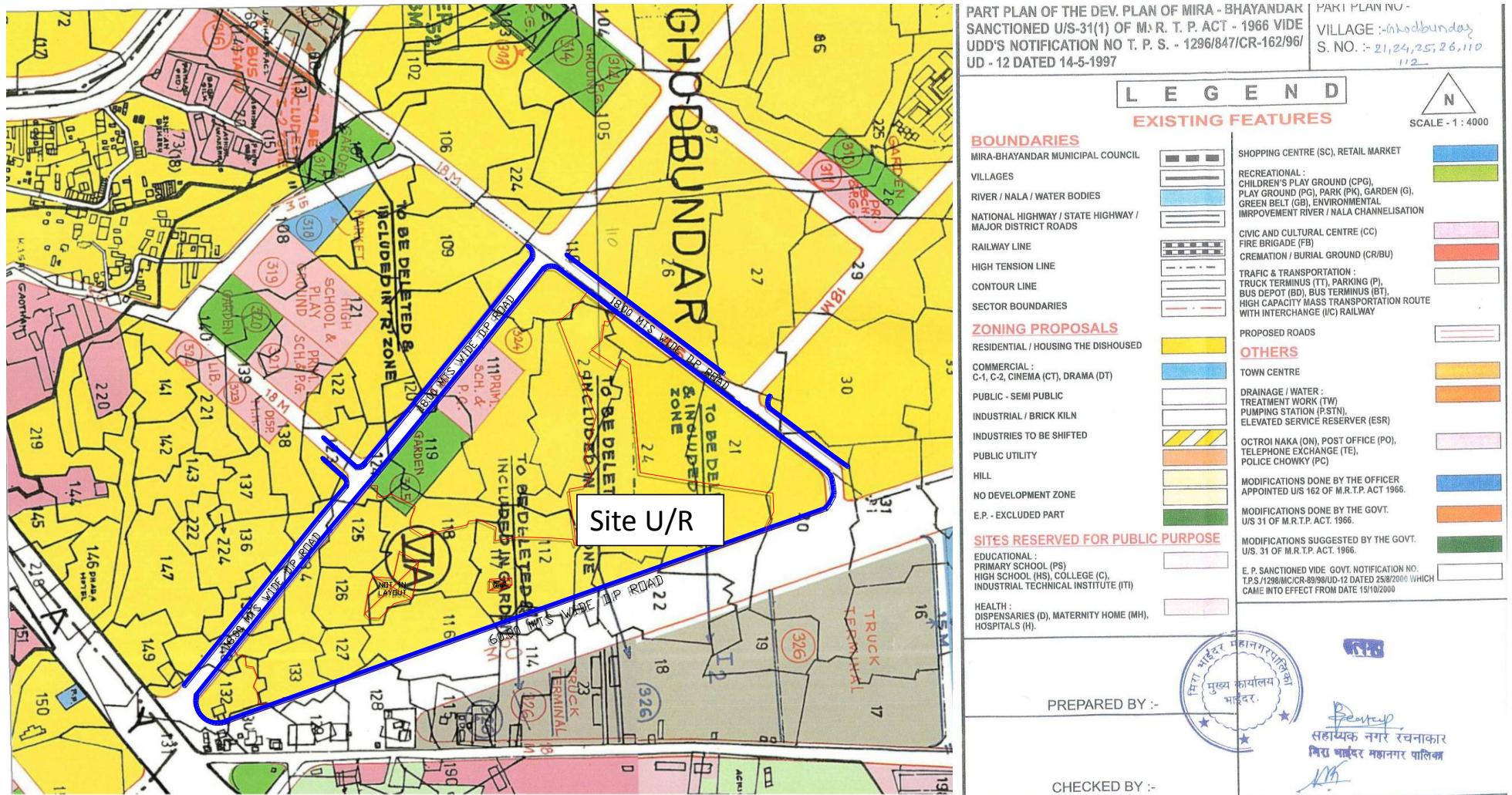




Figure No. 3: Development plan



**Point No. 3:** Wildlife conservation plan to be submitted.

**Compliance:**

**1) To promote community-based solutions to prevent and manage human-wildlife conflicts**

We will develop a “Toolbox” to address immediate and long-term issues by:

- Developing prevention and education materials and tools aimed at reducing human-wildlife conflicts;
- Developing and promoting the adoption of management practices for mitigating for human-wildlife conflicts;
- Exploring opportunities to improve incentive programs and to use other mechanisms to support private land stewardship;
- Assessing the role of landscape planning at various scales in helping to address human-wildlife conflicts.

**2) Build community-based solutions by**

- Encouraging local communities to initiate discussions on conflict issues;
- Connecting landowners who wish to address wildlife issues on their land with those who can contribute to resolving those problems (e.g. extension specialists, wildlife technicians, animal control agencies, hunters, trappers, naturalists’ groups).

**3) To increase public understanding and awareness about human-wildlife conflicts**

Establish a timely and practical knowledge base by:

- Developing “state of the resource” reporting;
- Conducting scientific studies and expanding knowledge of life history characteristics of selected wildlife species, including population dynamics, behavior and habitat requirements;
- Updating literature and jurisdictional reviews to obtain information about the causes of and solutions to human-wildlife conflicts, building on the success of others;
- Establishing demonstration and pilot projects to find creative solutions and develop effective tools to mitigate for human-wildlife conflicts;
- Developing extension and outreach tools.

**4) Education to effect change by:**

- Integrating efforts to educate the public about understanding ecological principles, their relationship with wildlife and the life histories of wildlife that reside near them;
- Incorporating information regarding human-wildlife conflicts into educational curriculum at all levels;
- Informing the public about actions by humans and wildlife that result in human-wildlife conflicts;
- Raising awareness of the public regarding the implications of their actions with respect to human-wildlife conflict;
- Acknowledging the role of resource management activities (such as regulated hunting, habitat conservation, and wildlife rehabilitation) in addressing human-wildlife conflicts.

**5) Mitigation measures on Project Site**

- A high wall with fencing erected to ensure that man – animal conflict avoided.
- Construction work will be avoided during night time to avoid negative impact on wildlife.
- Plot barricading will be done during construction phase.
- Hazards to wildlife due to vehicle will be prevented by maintaining speed limit in the areas of the project near to the eco -sensitive zone of national park.
- Emergency Contacts of the Wildlife Rehabilitation centers will be displayed in the project site for public awareness.

**Emergency Contacts**

Name of the Organization	Contact Information
Nature Information Center, SGNP	+91 22 2886 8686
Wildlife Conservation Trust (WCT), Mumbai	+91 22 4925 5555

**Point No. 4:** No excess treated effluent should be discharged into sea.

**Compliance:** No excess treated effluent shall be discharged in to sea. We will use treated water for gardening and flushing and excess treated water will be discharged to municipal sewer line.