

# GMR Logistics & Warehousing Park

Source: Extracted from SOI OSM Topomaps

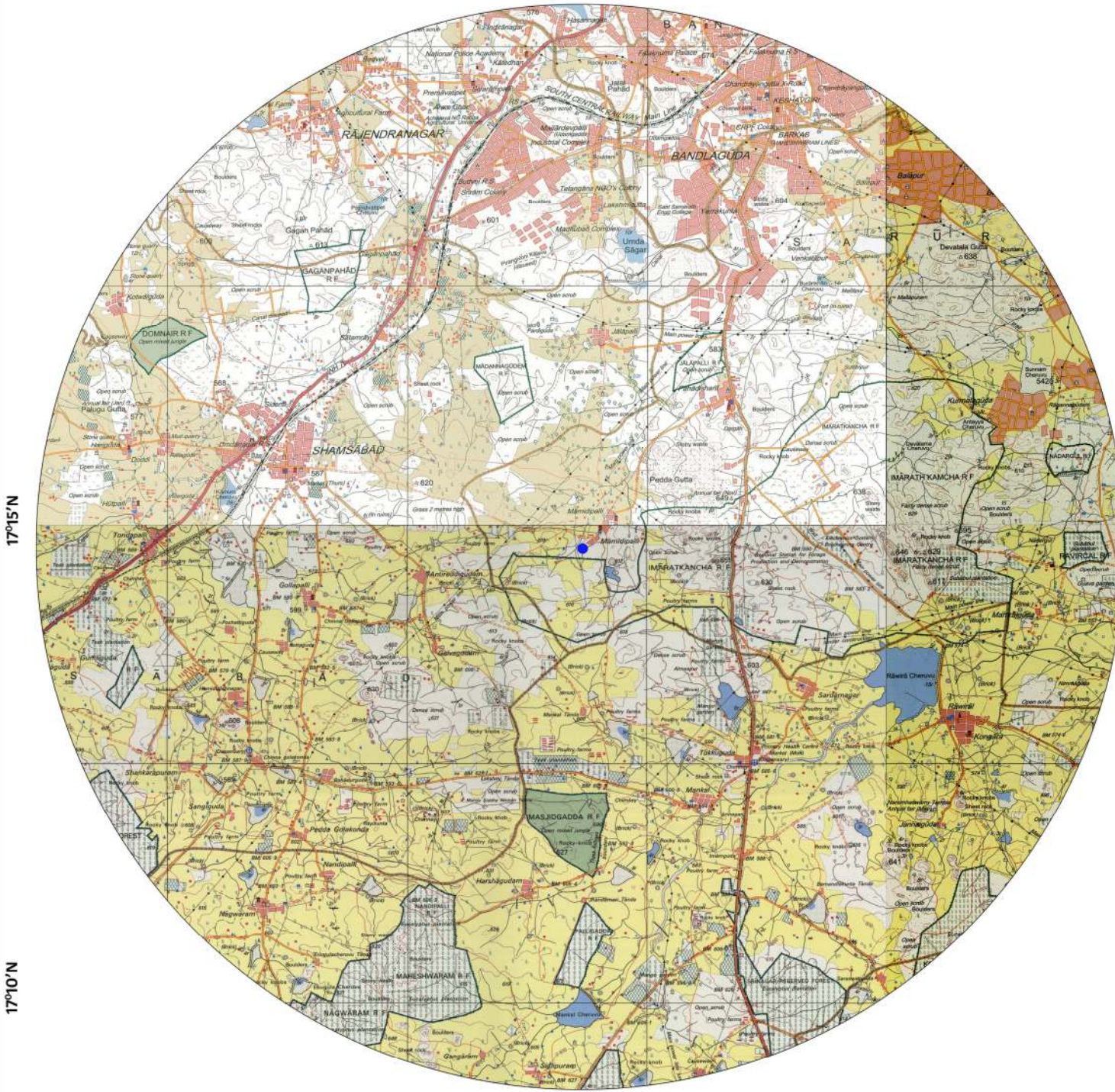
E44M7,E44M8,E44M11,E44M12 (56K/7,8,11,12)

AOI : 10 Km radius from the Site



## CONVENTIONAL SYMBOLS

- Express highway: with toll; with bridge; with distance stone .....
- Roads, metalled, according to importance .....
- Roads, double carriageway; according to importance .....
- Unmetalled road: Cart-track, Pack-track with pass, Foot-path .....
- Streams: with track in bed; undefined, Canal .....
- Dams: masonry or rock-filled; earthwork, Weir .....
- River: dry with water channel; with island & rocks, Tidal river ...
- Submerged rocks, Shoal, Swamp, Reeds .....
- Wells: lined; unlined, Tube-well, Spring, Tanks; perennial; dry .....
- Embankments: road or rail; tank, Broken ground .....
- Railways, broad gauge: double; single with station; under constr. ....
- Railways, other gauges: double; single with distance stone, do. ....
- Mineral line or tramway, Kin. Cutting with tunnel .....
- Contours with sub-features: Rocky slopes, Cliffs .....
- Sand features: (1) flat, (2) sand-hills (permanent), (3) dunes (shifting) .....
- Towns or Villages: inhabited; deserted, Fort .....
- Huts: permanent; temporary, Tower, Antiquities .....
- Temple, Chitrali, Church, Mosque, Idgah, Tomb, Graves .....
- Lighthouse, Lightship, Buoys: lighted; unlighted, Anchorage .....
- Mine, Vine on trellis, Grass, Scrub .....
- Palms; palmrye; other, Plantain, Conifer, Bamboo, Other trees .....
- Areas: cultivated, wooded, Surveyed tree .....
- Boundary, international .....
- state: demarcated; undemarcated .....
- district: subdivision; tahsil or taluk; forest .....
- Boundary pillars: surveyed; unlocated .....
- Heights, triangulated: station; point, approximate .....
- Bench-mark: geodetic; tertiary; canal .....
- Post office, Telegraph office, Overhead tank .....
- Rest house or inspection bungalow, Circuit house, Police station .....
- Camping ground, Forest: reserved, protected .....
- Spaced names: administrative; locality or tribal .....
- Hospital, Dispensary, Veterinary: Hospital / Dispensary .....
- Aerodrome, Helipad, Tourist site .....
- Power line: with pylons surveyed; with poles unsurveyed .....



17°15'N

17°10'N

78°25'E

78°30'E