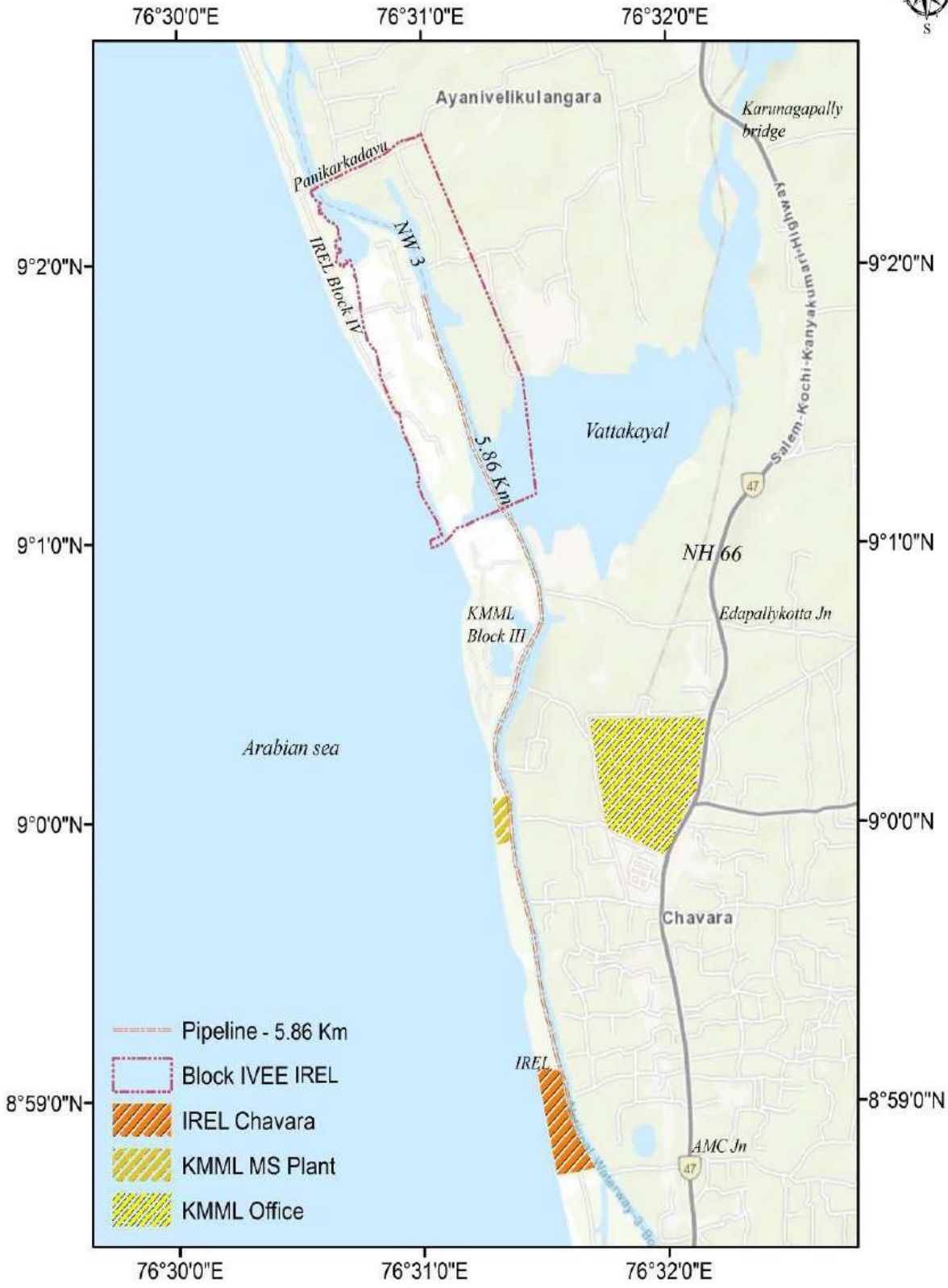
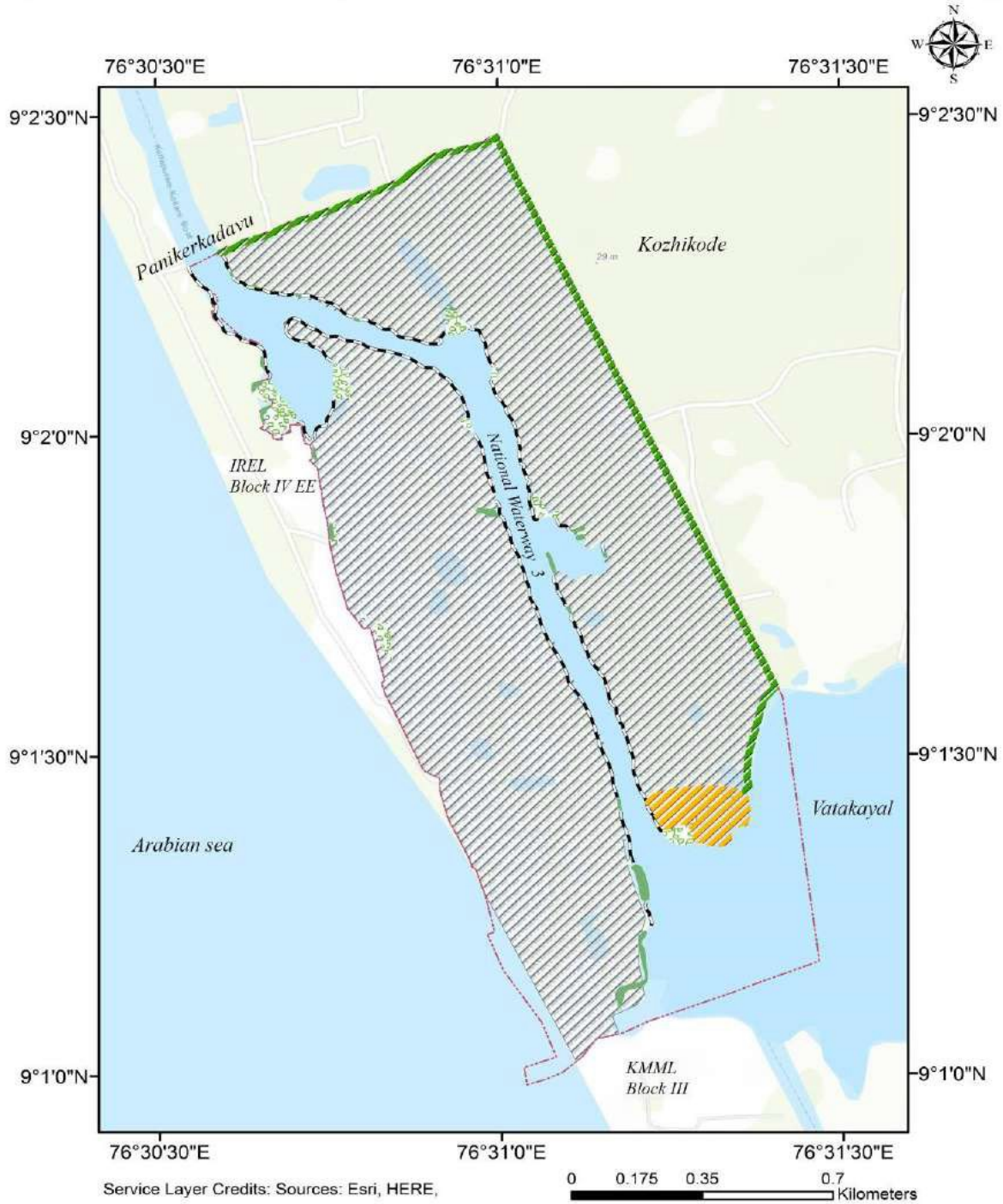










*Alternate plan for the mineral concentrate transportation using HDPE PNPE80 grade pipeline; Block IV EE to IREL*

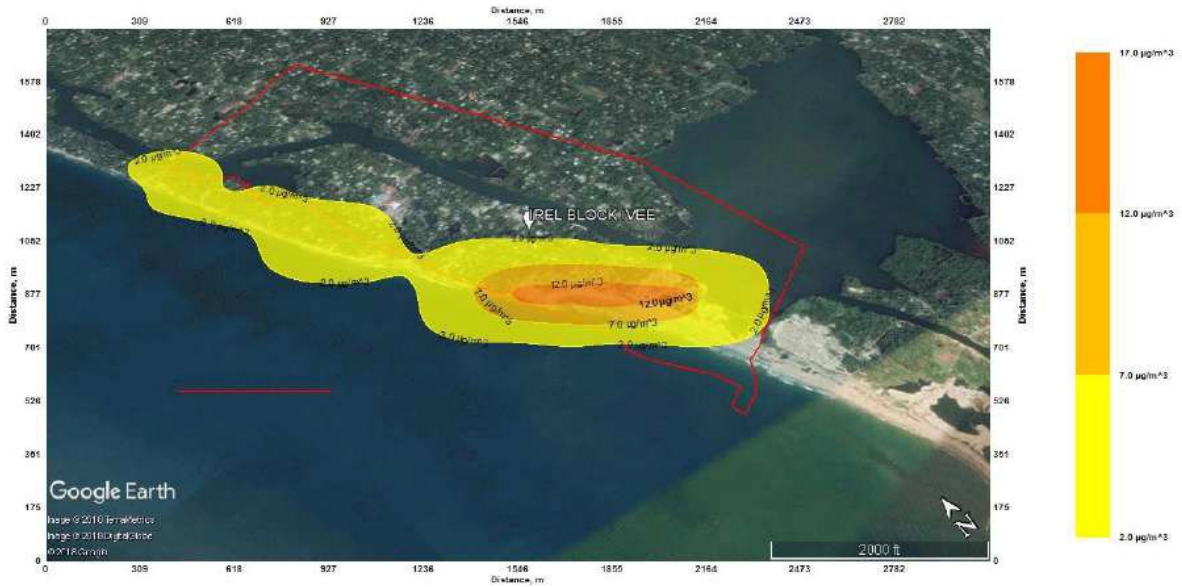


- Pipeline - 5.86 Km
- Block IV EE IREL
- IREL Chavara
- KMMML MS Plant
- KMMML Office

# Environment Management Plan: IREL Block IV EE 180 Ha



- |   |  |   |                      |
|---|--|---|----------------------|
|  | ML IREL Block IV EE                          |  | Green belt [5.82 Ha] |
|  | Rehabilitated with mixed plantation [130 Ha] |  | Wetland [3.52 Ha]    |
|  | Existing Mangrooves [1.32 Ha]                |  | Rip rap banks [5 Km] |
|  | Mangrove afforestation sites [2.73 Ha]       |  | Water bodies         |



Isopleth plot for the air quality before expansion



Isopleth plot for the air quality after expansion



# Proposed route diversion map for controlling truck traffic

