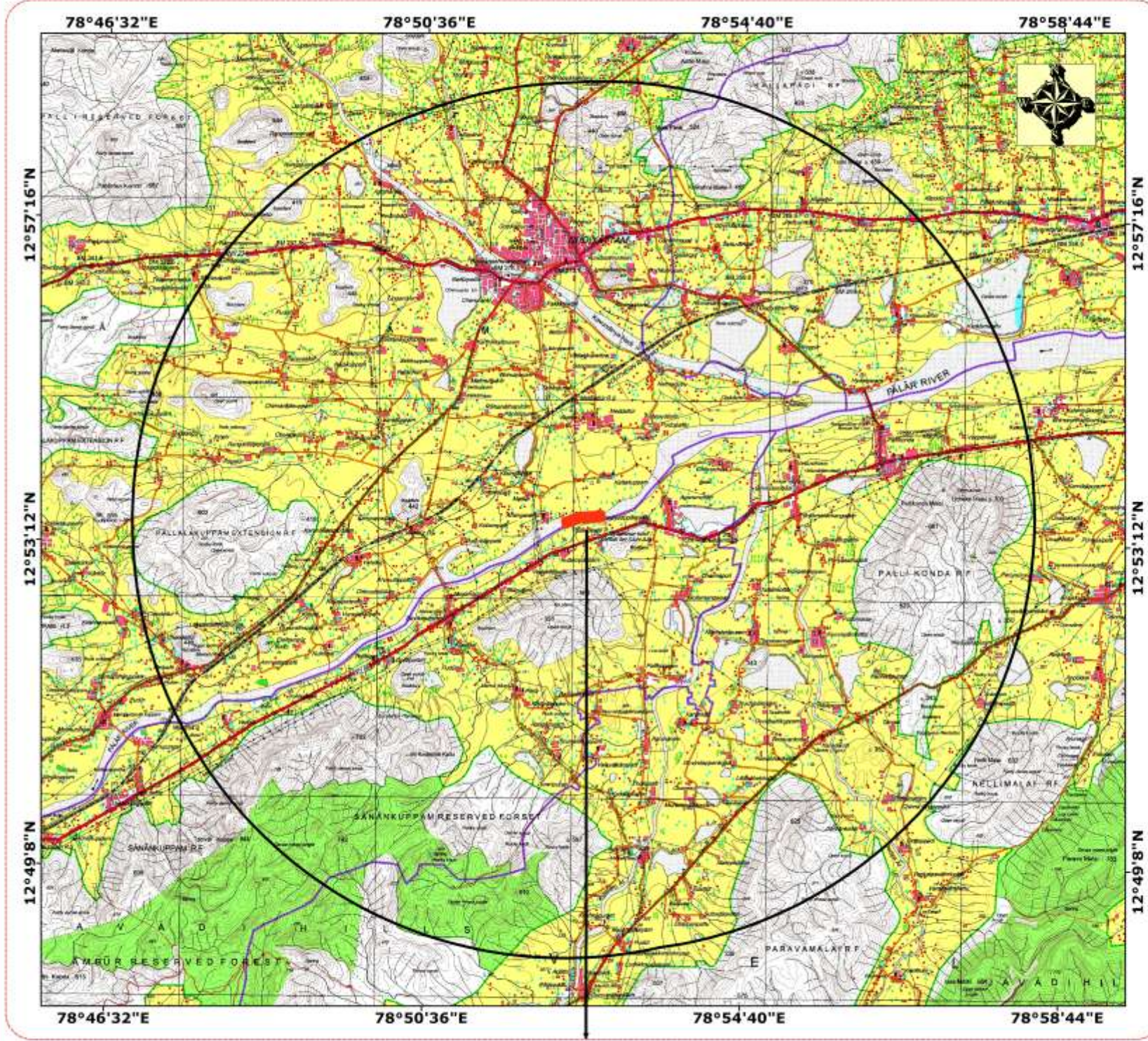


Toposheet Showing location of Quarry Lease Boundary around 10km Radius

PLATE NO: I



Source: Survey of India

LEASE AREA

INDEX

Toposheet No: 57 L/13

CONVENTIONAL SYMBOLS

Express Highway with 60' width bridge with distance scale	
Roads, main roads according to importance	
Unsurfaced road, Cart track, Path track with pass, Footpath	
Stream with bank in bed, undrained Canal	
Canal, Irrigation or water lift, water tank, Well	
River, dry with water channel, with river & rocks, Tidal river	
Submerged rocks, Shoal, Swamp, Marsh	
Wells, hand-dug, Tube-well, Spring, Tank, perennial, dry	
Drainage canals, road or rail, tank, Water pond	
Railways, broad gauge, double, single with station, meter gauge	
Railways, other gauges, double, single with distance scale, etc.	
Mineral line or tramway, K.M. Cutting with tunnel	
Contours with sub-features, Rocky slopes, Cliff	
Sand features (Hill, Spine, Ridge, etc.)	
Trenches or V-shaped, embankment, dike, fort	
Hill, permanent temporary, Tower, Archaic	
Temple, Church, Mosque, Ghat, Tank, Shrine, etc.	
Light house, Lighthouse, Beacon, Signal, etc.	
Wire, telegraph, power, etc.	
Plantations, other, Rubber, Coconut, Bamboo, Other trees	
Areas cultivated, wooded, Surveyed trees	
Boundary, international	
State demarcated, undemarcated	
Boundary pillars, surveyed, un-surveyed	
Heights, barometric, aneroid, aneroid, approximate	
Bench-mark, geodetic, leveling, aneroid	
Post office, Telegraph office, Overhead tank	
Rail station or inspection halting place, Circle house, Police station	
Camping ground, Forest, reserved, protected	
Sound tower, astronomical, lighthouse, etc.	
Hospital, Dispensary, Veterinary hospital, Dispensary	
Aerodrome, Helipad, Tented site	
Power line, with pylons surveyed, with poles un-surveyed	

Lease Boundary

LOCATION
 S.F.No: 1 (P) & 213 (P)
 Extent: 11.70.0 Ha
 Village: Koothampakkam & Ananganallur
 Taluk: Gudiyatham
 District: Vellore

APPLICANT
 The Executive Engineer, PWD/WRD
 Mining and Monitoring Division
 Chennai

SCALE

Prepared by

Anjantha