

TOPO SHEET NO. : 58 - I / 04

LATITUDE : 11° 01' 00.3744"N to 11° 01' 21.2828"N  
LONGITUDE : 78° 09' 04.6714"E to 78° 09' 23.3787"E

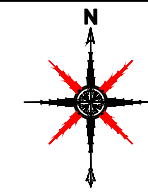


PLATE NO:I-B

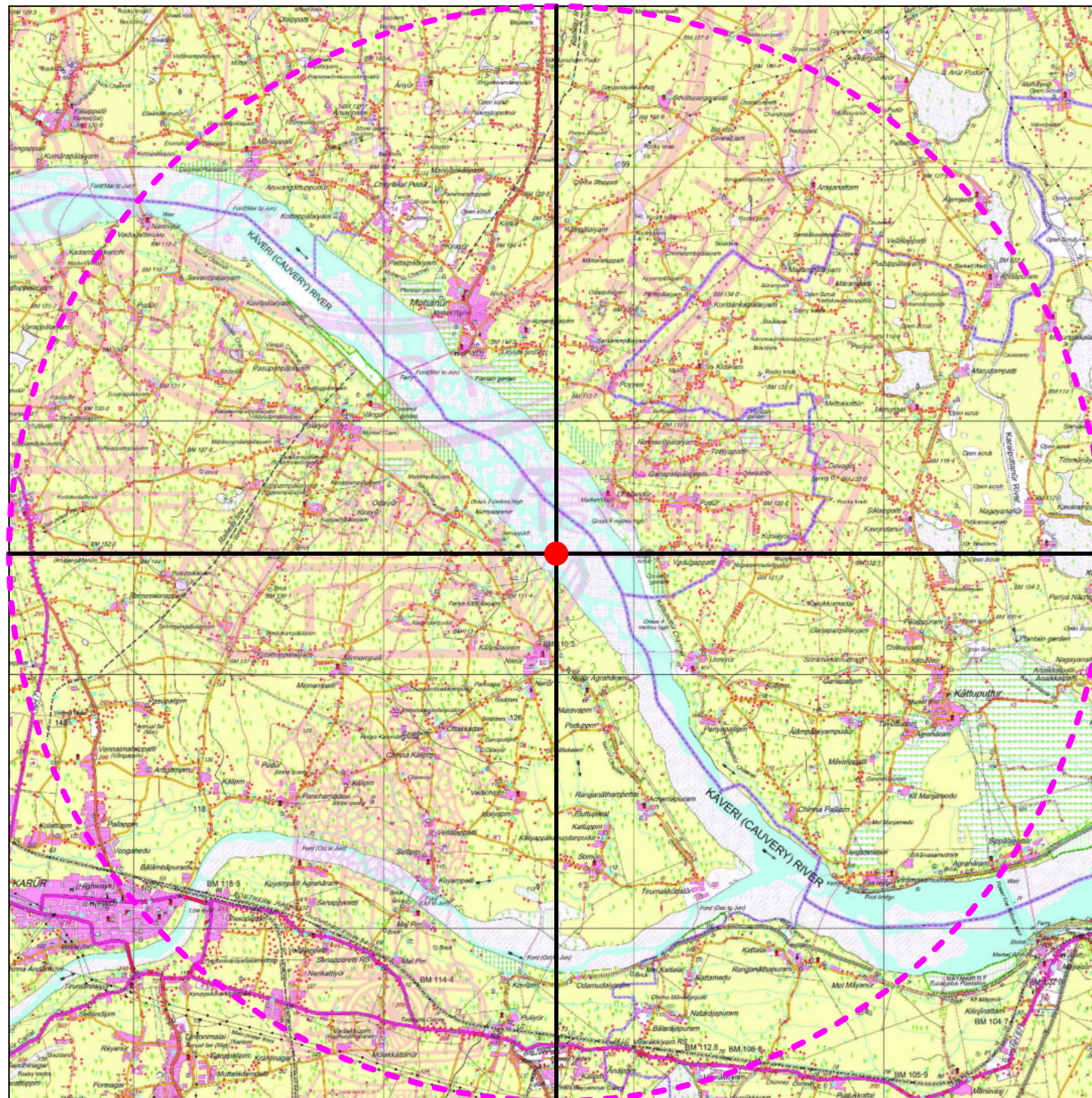
DATE OF SURVEY : 05.02.2022

10KM RADIUS : 

Q. L. A. AREA : 

11° 06' 46.46"N

78° 03' 35.64'E



78° 14' 52.54'E

10° 55' 35.19"N

**APPLICANT:**

THE EXECUTIVE ENGINEER,  
WATER RESOURCES DEPARTMENT,  
MINING & MONITORING DIVISION,  
THIRUCHIRAPALLI - 620 020.

**LOCATION OF QUARRY  
LEASE APPLIED AREA:**

S.F.No. : 2596A (P).  
EXTENT : 16.05.0 Ha.  
VILLAGE : NERUR NORTH  
TALUK : MANMANGALAM  
DISTRICT : KARUR  
STATE : TAMILNADU.

**CONVENTIONAL SYMBOLS**

|   |  |  |  |
|---|--|--|--|
| Express highway: with toll; with bridge; with distance stone        |  |  |  |
| Roads, metalled: according to importance                            |  |  |  |
| Roads, double carriageway: according to importance                  |  |  |  |
| Unmetalled road. Cart-track. Pack-track with pass. Foot-path        |  |  |  |
| Streams: with track in bed; undefined. Canal                        |  |  |  |
| Dams: masonry or rock-filled; earthwork. Weir                       |  |  |  |
| River: dry with water channel; with island & rocks. Tidal river     |  |  |  |
| Submerged rocks. Shoal. Swamp. Reeds                                |  |  |  |
| Wells: lined; unlined. Tube-well. Spring. Tanks: perennial; dry     |  |  |  |
| Embankments: road or rail; tank. Broken ground                      |  |  |  |
| Railways, broad gauge: double; single with station; under constr.   |  |  |  |
| Railways, other gauges: double; single with distance stone; do.     |  |  |  |
| Mineral line or tramway. Kiln. Cutting with tunnel                  |  |  |  |
| Contours with sub-features. Rocky slopes. Cliffs                    |  |  |  |
| Sand features:(1)flat. (2)sand-hills(permanent). (3)dunes(shifting) |  |  |  |
| Towns or Villages: inhabited; deserted. Fort                        |  |  |  |
| Huts: permanent; temporary. Tower. Antiquities                      |  |  |  |
| Temple. Chhatri. Church. Mosque. Idgah. Tomb. Graves                |  |  |  |
| Lighthouse. Lightsip. Buoys: lighted; unlighted. Anchorage          |  |  |  |
| Mine. Vine on trolis. Grass. Scrub                                  |  |  |  |
| Palms: palmyra; other. Plantain. Conifer. Bamboo. Other trees       |  |  |  |
| Areas: cultivated; wooded. Surveyed tree                            |  |  |  |
| Boundary, international   |  |  |  |
| state: demarcated; undemarcated                                     |  |  |  |
| district; subdivision; tahsil or taluk; forest                      |  |  |  |
| Boundary pillars: surveyed; unlocated                               |  |  |  |
| Heights, triangulated: station; point; approximate                  |  |  |  |
| Bench-mark: geodetic; tertiary; canal                               |  |  |  |
| Post office. Telegraph office. Overhead tank                        |  |  |  |
| Rest house or Inspection bungalow. Circuit house. Police station    |  |  |  |
| Camping ground. Forest: reserved; protected                         |  |  |  |
| Spaced names: administrative; locality or tribal                    |  |  |  |
| Hospital. Dispensary. Veterinary: Hospital / Dispensary             |  |  |  |
| Aerodrome. Helipad. Tourist site                                    |  |  |  |
| Power line: with pylons surveyed; with poles unsurveyed             |  |  |  |

**TOPO SKETCH OF QUARRY**

**LEASE APPLIED AREA FOR**

**10Km RADIUS**

SCALE- 1:100000

**PREPARED BY :**

THIS IS TO CERTIFY THAT THE INFORMATION IN THIS  
PLATE IS TRUE AND CORRECT TO THE  
BEST OF MY KNOWLEDGE BASED UPON THE LEASE MAP  
AUTHENTICATED  
BY STATE GOVERNMENT



Dr.M.IFTHIKHAR AHMED,M.Sc.,M.B.A.,F.G.S.,Ph.D.,  
RECOGNIZED QUALIFIED PERSON  
RQP/MAS/183/2004/A